



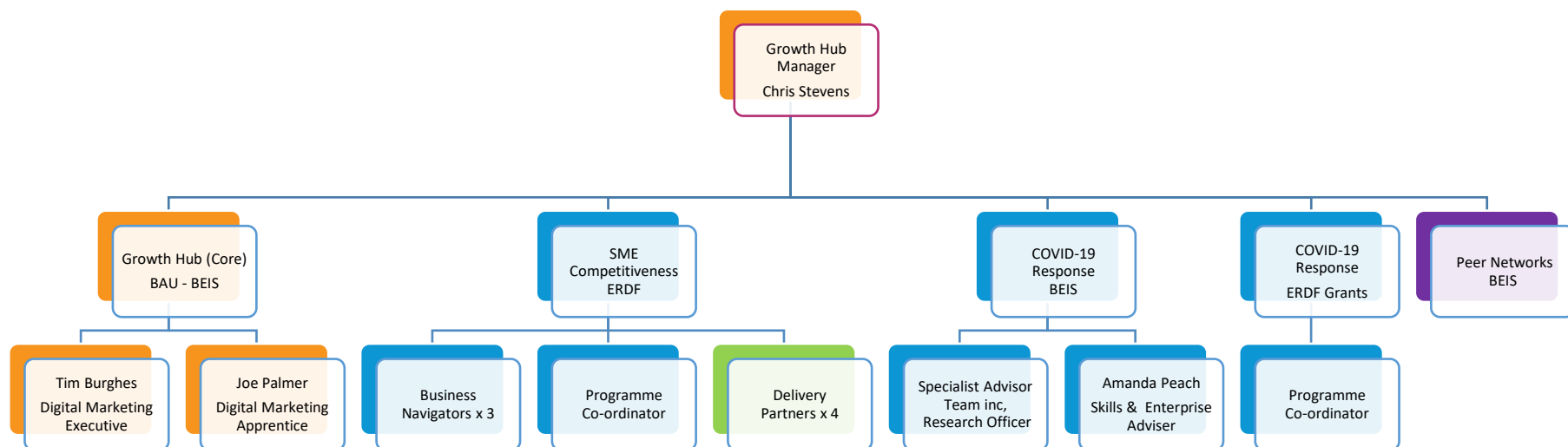
Growth Hub

Paper 4.3, Page 54

For information



Growth Hub Delivery & Mobilisation – July/August 2020

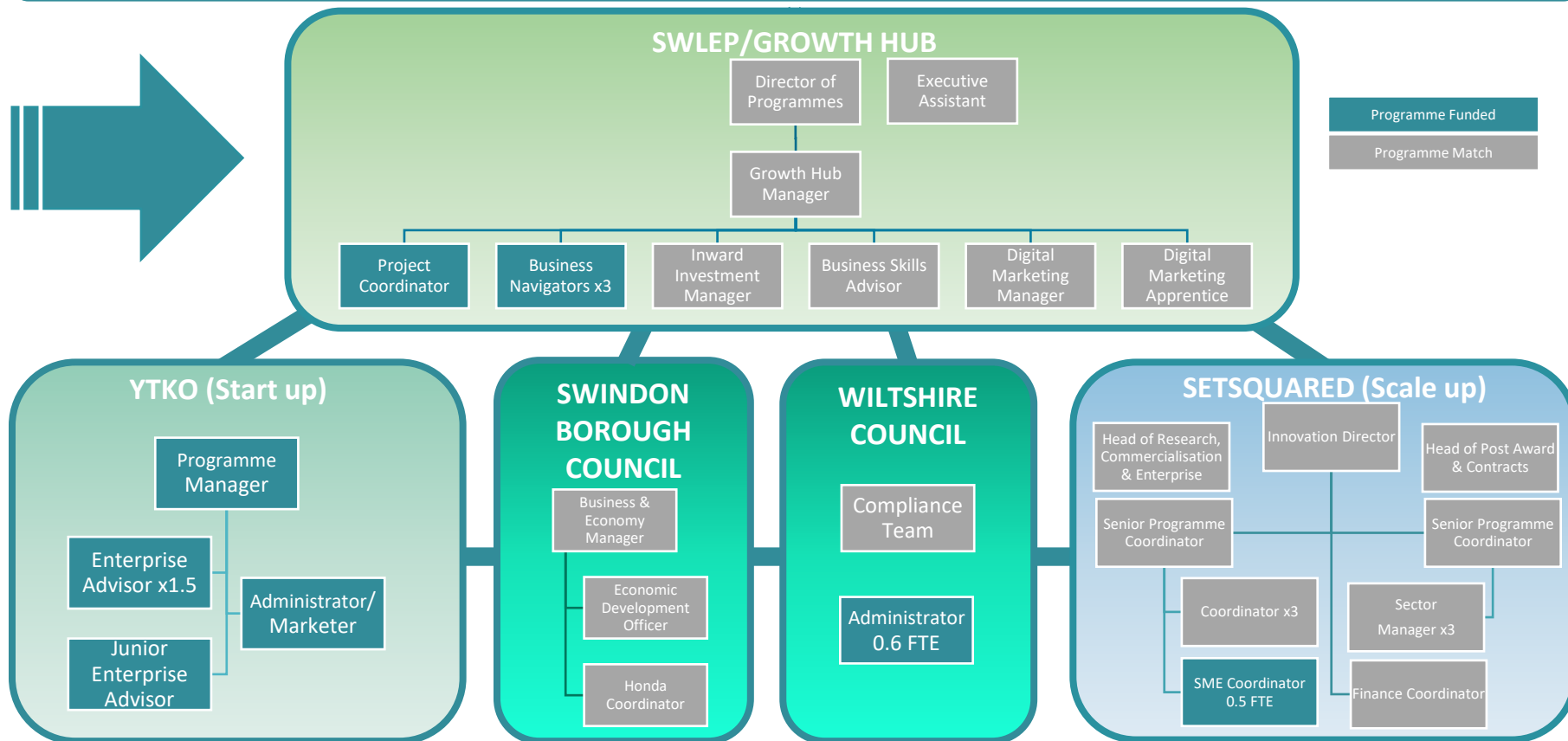


	Business as Usual (core funding)		Delivery Partners – contracted organisations to deliver the programme - outputs
	NEW Programmes/additional funding Vacancies – specifically funded project roles		Future Programmes – pending bids/EOI's – new activity (reach and impact) for the GH

SME Competitiveness (ERDF) – 3 year contract £2.4m contract, £1.2m grant

- A pre, start-up and early stage support service will be delivered jointly by YTKO and by the Growth Hub (Navigators) and include a tailored start-up service for Honda employees facing redundancy via the Growth Hub in partnership with Swindon Borough Council;
- A support service to help existing businesses with growth and scale-up potential, delivered jointly by the University of Bath (SETsquared), the Growth Hub Navigators and Swindon Borough Council providing supply chain support for Honda suppliers.
- Wiltshire Council will support via TEN Centres and Contract Compliance.

SME Competitiveness Programme (Delivery)



SME Competitiveness Programme (Governance)

