



Swindon & Wiltshire
LOCAL ENTERPRISE PARTNERSHIP

SWLEP Proposed Business Cyber Centre



Purpose: INFORM on progress and DECIDE on Cyber Hub location

Overview



Secure Senior Stakeholder
Engagement



Business Cyber Centre Framework



Macro Assessment



Site Assessments



Next Steps

INFORM: Secure Senior Stakeholder Engagement

HOW? Strategic Leader Dining Event

WHEN? 26 Mar 20 (Provisional)

WHERE? Institute of Directors, London

WHO? Representatives from key stakeholder groups (SEE NEXT SLIDE)

COST? Being funded by EY / Interested Venture Capitalist

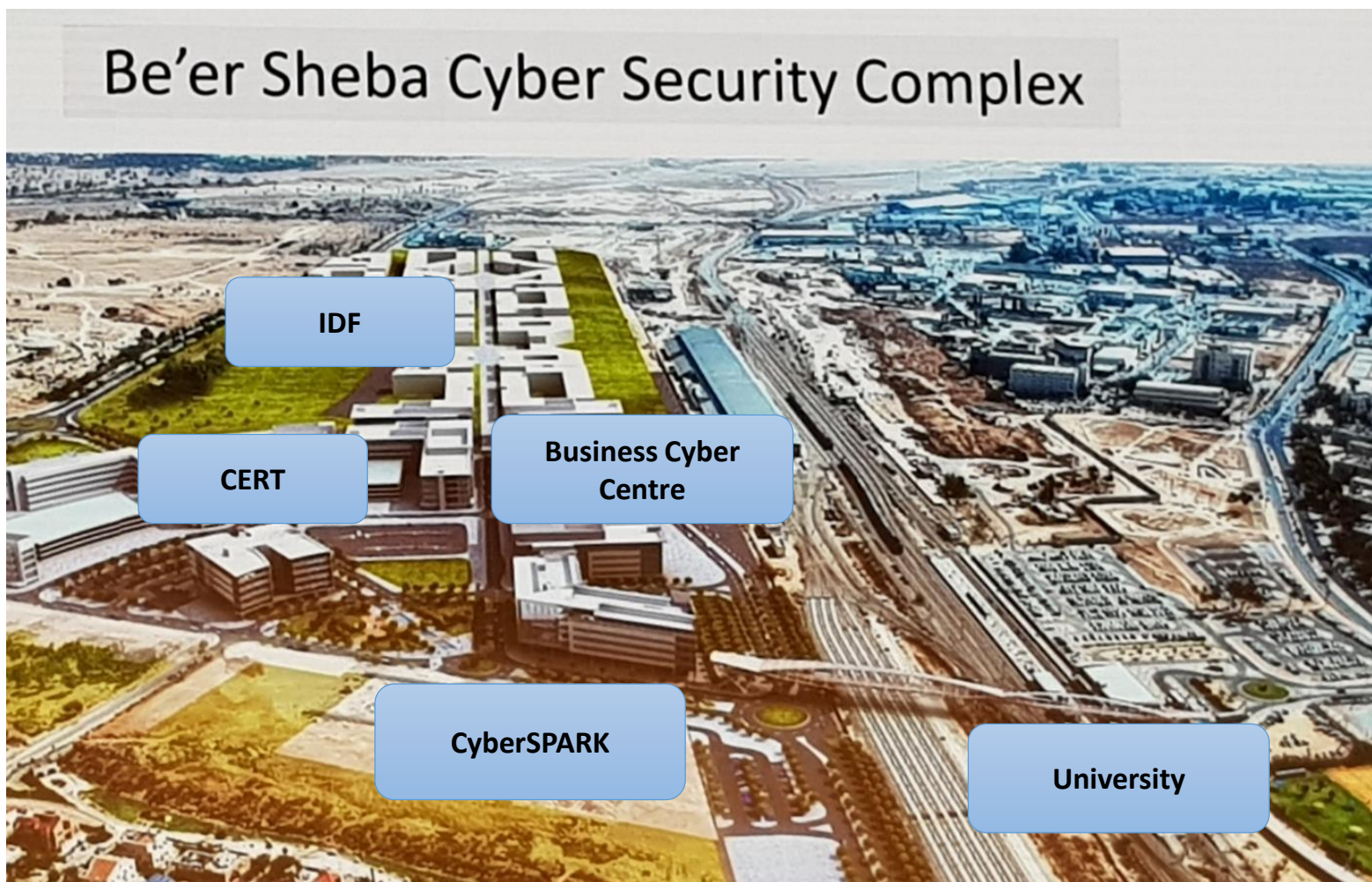
INTENDED OUTCOME. The intended outcome is to have **clear support** and enthusiasm from each of the **stakeholder groups to proceed** with the Cyber Hub project.

INFORM: Secure Senior Stakeholder Engagement

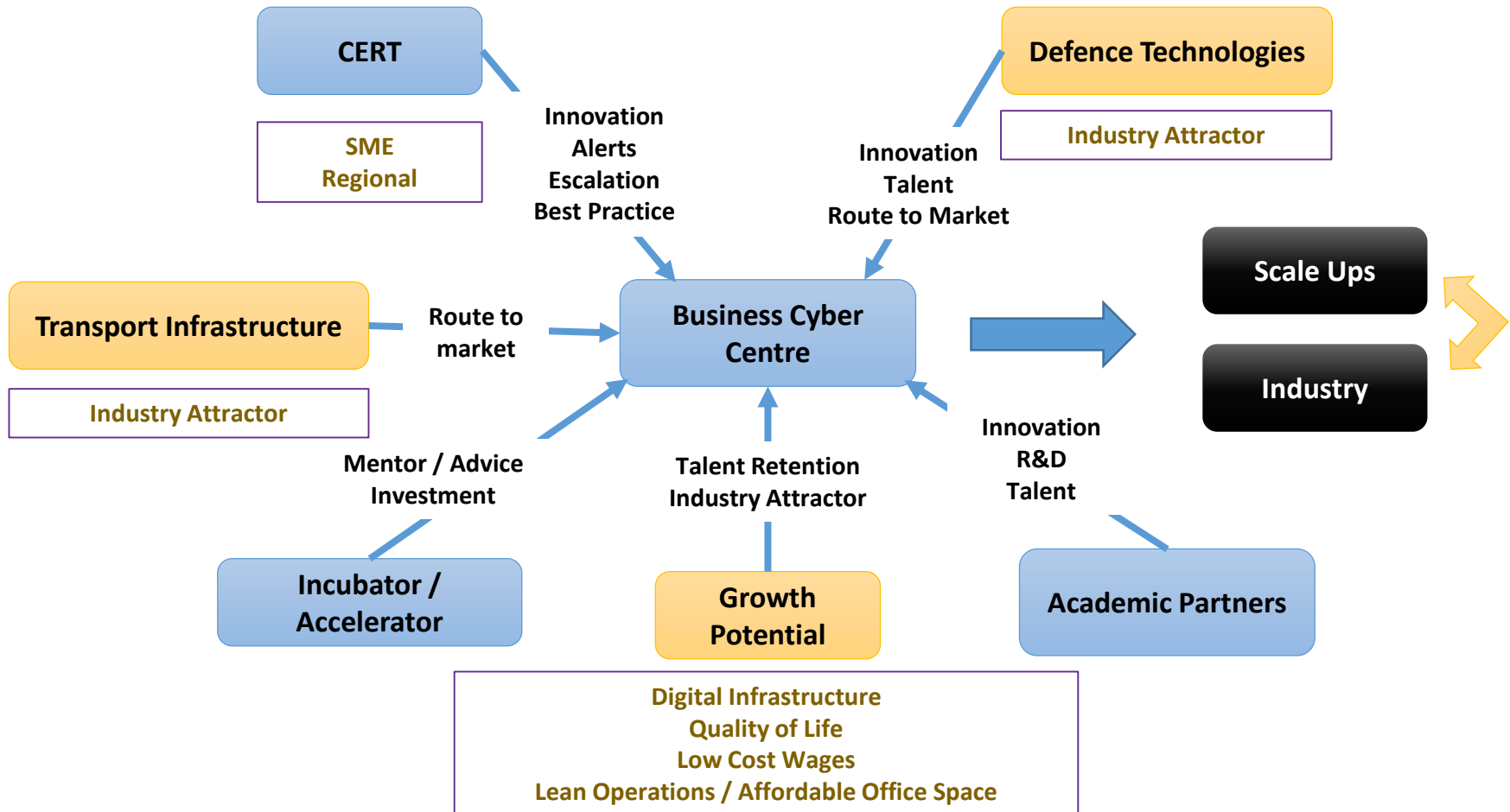
Invite List:

Stakeholder Group	Organisation
Defence	Chief Information Officer – Ministry of Defence Director Secure Operations Centre
Big Industry	Zurich Insurance Venture Capitalist Ernst & Young
Local Government	Leader, Wiltshire Council Leader, Swindon Borough Council
National Government	MP, Chippenham MP, Salisbury MP, Devizes MP, Swindon South Department for Business Innovation and Industrial Strategy
National Agencies	Head of Cyber Security, GCHQ
SWLEP	Chairman Director Board Sponsor for Cyber
Specialist	SWLEP Cyber Consultant West of England Cyber Cluster
Academia	To be confirmed

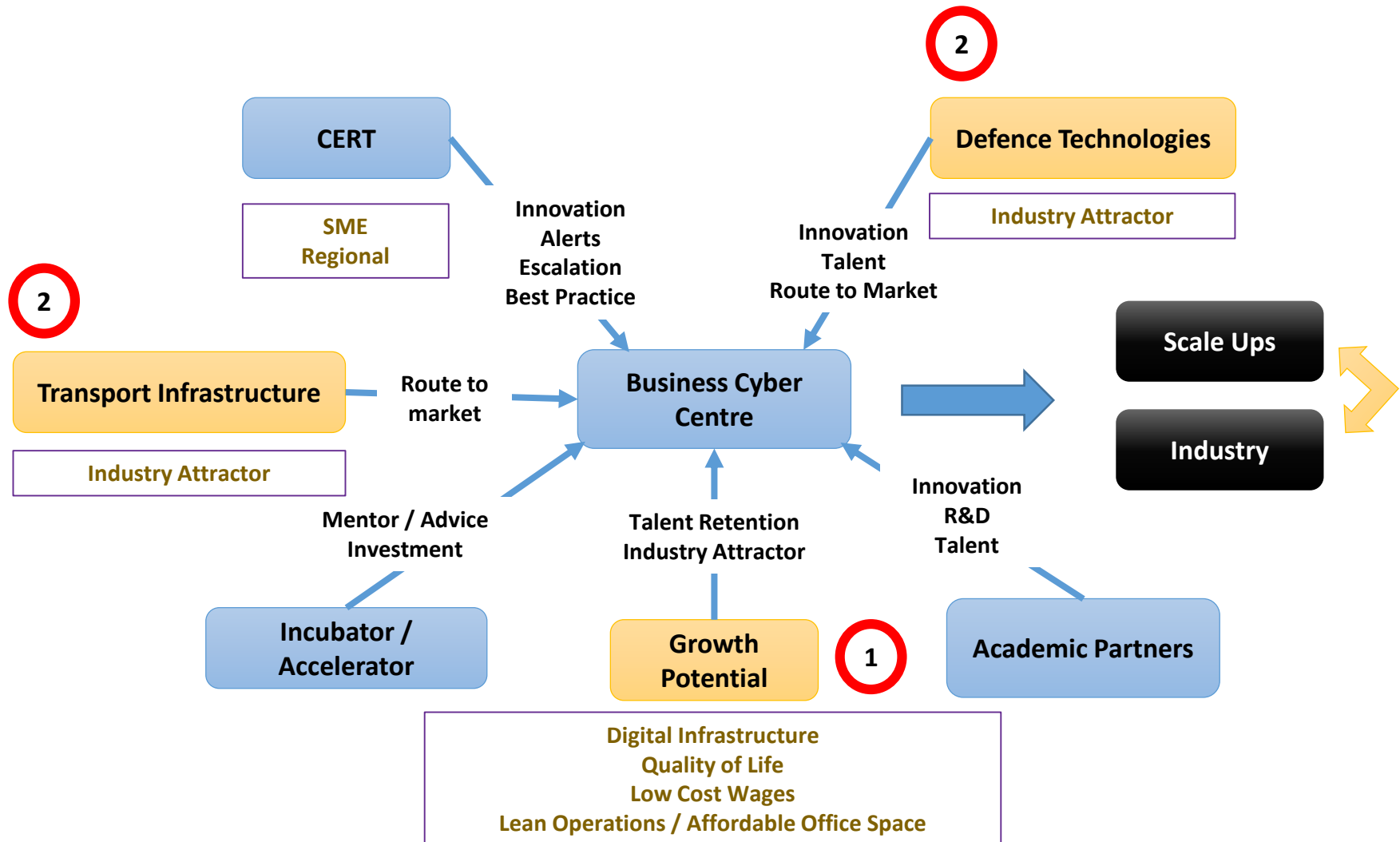
Business Cyber Centre Framework



Business Cyber Centre Framework



Business Cyber Centre Framework



INFORM: Develop detail on Cyber Hub components / critical interactions

Learn from experiences of CSIT – Belfast (11 Feb 20)



- ▶ 14 years of contribution to society
- ▶ 250 people working in Institute, 180 in our building
- ▶ 60 facilitated start-ups
- ▶ 11 spin-out companies

- ▶ 170 companies on the Science Park
- ▶ 3000 people employed
- ▶ £100M+ p.a. in salaries for economy

Comparison: % Rate as GOOD

	Office Rent (£/sq ft)	House Price (£)	Talent Supply (%)	Digital Growth Optimism (%)	Quality of Life	Transport Infra
	Belfast £19.00	Belfast £148,125	Cambridge 72%	Cambridge 95%	Malvern Worcs 95%	London 57%
	Cardiff Swansea £21.00	Cardiff Swansea £185,639	Oxford 54%	Bristol & Bath 88%	Bristol & Bath 92%	Reading 43%
	Oxford £25.00	Malvern Worcs £109,072	London 45%	Oxford 78%	Cambridge 92%	Cardiff Swansea 26%
	Bristol & Bath £27.00	Bristol & Bath £315,523	Reading 42%	London 78%	Cardiff Swansea 89%	Oxford 23%
	Reading £36.00	Reading £390,592	Bristol & Bath 41%	Reading 77%	Oxford 85%	Bristol & Bath 20%
	Cambridge £36.00	Oxford £521,732	Belfast 33%	Belfast 76%	Reading 74%	Belfast 20%
	London £87.50	Cambridge £522,820	Cardiff Swansea 31%	Cardiff Swansea 61%	Belfast 67%	Malvern Worcs 11%
		London £582,816	Malvern Worcs 12%	Malvern Worcs 56%	London 59%	Cambridge 10%
	Swin £15.00 Wilts £10-£15*	Swin £213,629 Wilts 271,260			Swin £50,916 ** Wilts £49,167 **	

% Rate as GOOD

* FEMA report 2017 data ** IT Jobs Watch. UK Average is £57,000. Figures represent median wages that are above 85% of the UK

Comparison: Growth Potential

Quality of Life	Low Cost Wages	Properties @ Comp Rates	Digital Infrastructure
Swindon House Price: £214k Accessible: YES Public Transport: Ltd	Corsham £49,167	Swindon Rates reasonable Growth possible Physical proximity	Corsham Superfast: YES Resilience: YES
Corsham House Price: £271k Accessible: YES Public Transport: Ltd	Porton £49, 167	Corsham Rates Reasonable Growth possible Physical proximity	Porton Superfast: ?? Resilience: YES
Porton House Price: £271k Accessible: NO Public Transport: NO	Swindon £50,916	Porton Rates reasonable Rather Isolated Physical proximity	Swindon Superfast: ?? Resilience: NK



Comparison: Growth Challenges

	Travel London*	Travel Heathrow**	Proximity to Defence Tech
Acceptable Travel Time	Swindon (70 min) Drive: 15 mins Train: 55 min	Porton (85 min) Drive: 75 min	Corsham (0 min) ISS Corsham on-site
	Corsham (90 min) Drive: 16 min Train: 71 min	Swindon (75 min) Drive: 90 min	Porton (0 min) DSTL / DASA on-site
	Porton (120 min) Drive: 25 min Train: 92 min	Corsham (105 min) Drive: 105 min	Swindon (35 min) Drive: 35 min (ISS)

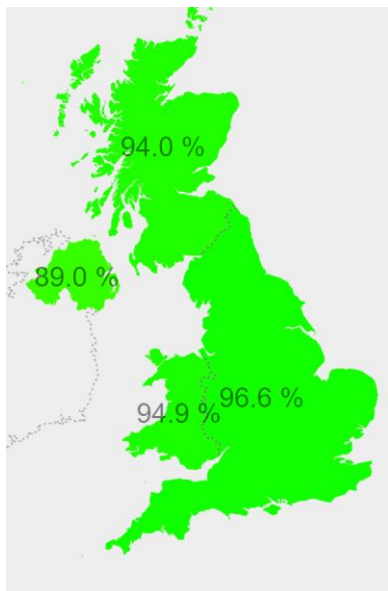
Times calculated using Google Maps

* Travel time is drive time to closest train hub + train time to London terminal

** Drive time from site to T5 calculated using Google Maps (Depart time 0900)

Train travel times continue to fall

Digital Infrastructure



**Definition: Superfast
Broadband: >30 Mbps**

England: >97%

Note: All B1 sites inspected provided the following:

- (Minimum of) 300KVA
- 1GB Fibre to site

Corsham

	Highest available download speed	Highest available upload speed	Availability
Standard	20 Mbps	1 Mbps	✓
Superfast	80 Mbps	20 Mbps	✓
Ultrafast	--	--	✗

Swindon

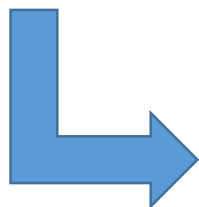
	Highest available download speed	Highest available upload speed	Availability
Standard	12 Mbps	1 Mbps	✓
Superfast	--	--	✗
Ultrafast	--	--	✗

Porton

	Highest available download speed	Highest available upload speed	Availability
Standard	6 Mbps	1 Mbps	✓
Superfast	--	--	✗
Ultrafast	--	--	✗

Site Assessment – Simple Scoring

Site	Quality of Life	Low Cost Wages	Commercial Properties	Digital Infra	Travel - London	Travel LHR	Proximity to Defence Tech
Swindon NCC Wroughton	3	1	2	2	3	3	1
Corsham Science Park	2	3	3	3	2	1	3
Porton Science Park	1	2	1	1	1	2	2



Site	Total Score
Swindon NCC Wroughton	15
Corsham Science Park	17
Porton Science Park	10

Purpose: INFORM on progress and **DECIDE** on Cyber Hub location

The SWLEP Board is recommended to APPROVE:

- Corsham as the preferred site for the SWLEP Cyber Hub.
- The initial demonstrator to be established at the Corsham Science Park.
- Continuing development of detailed business case.



Swindon & Wiltshire
LOCAL ENTERPRISE PARTNERSHIP

Questions

