

# CEO Report Paper 5.0, Page 17

*For discussion*



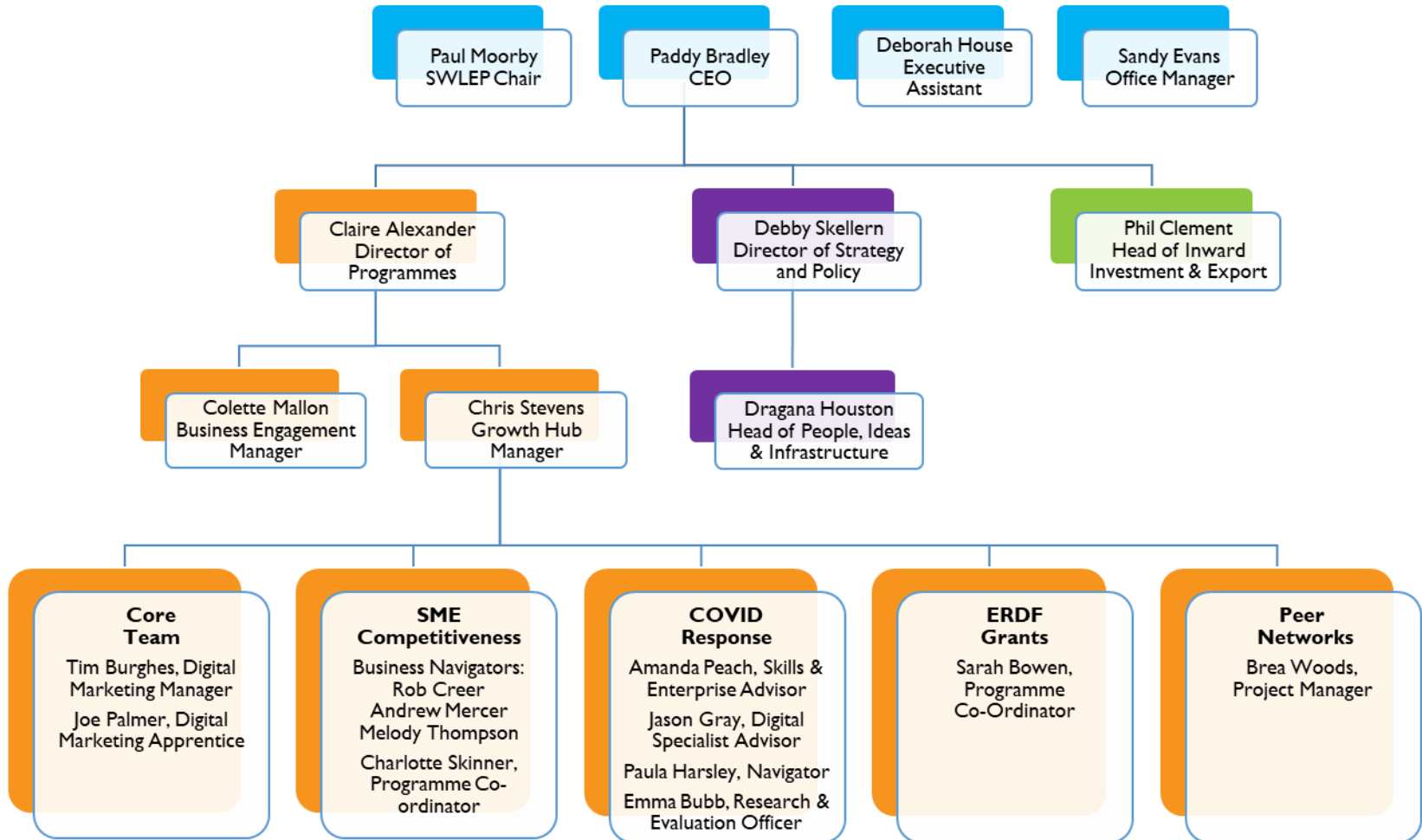
## CEO Update

- Post Covid-19 Recovery Planning
- Getting Building Fund (GBF)
- Board Recruitment
- SWLEP Staffing Structure
- Governance Structure
- Budget



# Swindon & Wiltshire

LOCAL ENTERPRISE PARTNERSHIP



# LGF Finance Report Paper 8.1, Page 33

*For discussion*



## QI Performance

- 20/21 is the final year of LGF expenditure.
- Profile spend for 20/21, £41.8m which includes £3m carried forward from 19/20.
- QI figures from Accountable Body confirm £6.858m spend.
- Remaining spend for period £35.022m.
- Above figures exclude DfT which are reported separately.

## LGF Review

- Initial submission made on 17.06.20 with feedback from BEIS that 1/3 payment will be held subject to further scrutiny.
- Further submission made on 13.08.20 showing much improvement.
- BEIS has verbally confirmed that a third submission will not be required and remaining 1/3 grant will be released in October 2020. SWLEP awaiting written confirmation.
- BEIS indicated that a further review of outputs will be required and the Director of Programmes will oversee this, working through the Delivery & Performance Team and with LA's Officers as required.
- Breakdown of improved position overleaf.

## LGF Review @ 13.08.20

<b>SUMMARY:</b>	<b>17/6/20</b>	<b>12/8/20</b>	<b>Notes</b>
<b>LGF Grant</b>	<b>71.07</b>	<b>70.754</b>	Reduced by £316k, not material.
<b>Unspent</b>	<b>41.83</b>	<b>35.022</b>	Reduced by £6.8m, due to Q1 spend
<b>Contracted</b>	<b>12.38</b>	<b>15.931</b>	£3.55m now moved to contracted status
<b>Not yet contracted</b>	<b>29.46</b>	<b>19.091</b>	Reduced by £10.4m (spent and contracted)
<b>Post Mar 2021</b>	<b>4.35</b>	<b>1.257</b>	Reduced by £3m, due to reallocation/reprofiling.

See next slide for breakdown per project across the two submissions.

## LGF At Risk Projects

- At 1<sup>st</sup> September these projects remain substantially uncontracted and are material amounts >£4m and require further Board discussion:
  - The Maltings, now known as River Park – Non transport project with Outline Business Case presented today for approval.
  - A350 Yarnbrook – a detailed updated will be provided today by Wiltshire Council, the Scheme Promoter.
- In addition, and whilst not material, the following projects are still showing spend post March 2021 which is not permissible under the terms of LGF funding: Chippenham Station £207k and Nythe Road & Piccadilly Roundabout £50k. Officers are working hard to ensure Works Orders are progressed on a proactive and timely basis.

# LGF Review – Breakdown & Comparison

<b>LGF REVIEW - SUMMARY</b>	<b>LGF Grant 170620</b>	<b>LGF Grant 120820</b>	<b>Unspent LGF 170620</b>	<b>Unspent LGF 120820</b>	<b>Contracted 170620</b>	<b>Contracted 120820</b>	<b>Not yet contracted 170620</b>	<b>Not yet contracted 120820</b>	<b>Post March 2021 at 170620</b>	<b>Post March 2021 at 120820</b>
A350 Yarnbrook/West Ashton	5.50	5.500	4.80	4.710	0.00	0.000	4.80	4.710	1.00	1.000
Chippenham Station Hub - 3rd Lift	1.50	1.500	1.34	1.343	0.00	0.267	1.34	1.076	0.42	0.000
Chippenham Station Hub - Station	1.40	1.400	1.40	1.400	0.00	0.450	1.40	0.950	0.72	0.000
Chippenham Station Hub - Sustainable	1.98	1.664	1.94	1.610	0.00	0.998	1.94	0.612	0.43	0.087
Chippenham Station Hub - Sadlers Mead	6.90	6.900	5.19	4.547	0.00	4.147	5.19	0.400	0.20	0.120
Gablecross Junction (NEV)	4.40	4.400	2.52	2.467	0.40	0.396	2.12	2.071	0.00	0.000
M4 J15	3.00	3.000	3.00	3.000	0.00	3.000	3.00	0.000	0.00	0.000
Maltings (River Park)	6.06	6.060	5.40	5.379	0.00	0.000	5.40	5.379	0.00	0.000
Nythe Road/Piccadilly Roundabout	2.93	2.930	2.45	2.420	0.50	0.496	1.97	1.924	0.24	0.050
People Friendly Streets (was RAM)	1.35	1.300	1.35	1.300	0.00	0.000	1.35	1.300	1.35	0.000
Salisbury - Fisherton Gateway	0.50	0.500	0.50	0.070	0.50	0.070	0.00	0.000	0.00	0.000
Salisbury - Illuminating Salisbury	0.10	0.100	0.05	0.049	0.05	0.049	0.00	0.000	0.00	0.000
Salisbury - Transforming Accessibility	0.25	0.250	0.16	0.160	0.16	0.160	0.00	0.000	0.00	0.000
Swindon Bus Boulevard	3.00	3.000	0.18	0.157	0.18	0.157	0.00	0.000	0.00	0.000
Swindon Cultural Quarter	0.25	0.250	0.21	0.186	0.02	0.063	0.19	0.123	0.00	0.000
Swindon Bus Corridor (Rapid Transit)	8.92	8.920	3.11	2.846	2.35	2.350	0.76	0.496	0.00	0.000
SWLEP LIS Projects	0.00	0.050	0.05	0.050	0.00	0.000	0.00	0.050	0.00	0.000
UltraFast Broadband	1.00	1.000	1.00	1.000	1.00	1.000	0.00	0.000	0.00	0.000
Wiltshire College - Lackham Campus	8.20	8.200	3.47	1.328	3.47	1.328	0.00	0.000	0.00	0.000
Wiltshire College - Salisbury Campus	13.83	13.830	3.76	1.000	3.76	1.000	0.00	0.000	0.00	0.000
<b>Totals LGF</b>	<b>71.07</b>	<b>70.754</b>	<b>41.88</b>	<b>35.022</b>	<b>12.38</b>	<b>15.931</b>	<b>29.46</b>	<b>19.091</b>	<b>4.35</b>	<b>1.257</b>

# Salisbury River Park OBC

## Paper 8.2, Page 38

*For approval*



## Key points

- Delivery of essential infrastructure, providing flood risk alleviation and environmental improvements.
- Completion of project will significantly reduce flood risk to a large part of the city and neighbouring areas.
- Expected to unlock 457 new residential units.
- LGF allocation £6.06m - £860k relates to spend to date and project management costs. Proposed £5.2m to transfer to EA as match within an £18.9m scheme funded by Flood Defence Grant in Aid (FDGIA).
- ITA review advises BCR of 2.1 which is considered High Value for Money.

## Recommendation

- SWLEP Board to approve with two conditions, that are fully stated within the LGF Grant Agreement:
  - risk liability is fully defined and that should the scheme not progress or complete for any reason the LGF match element of £5.2m will be subject to clawback by SWLEP (exact legal mechanics to be agreed); and
  - a detailed Monitoring and Evaluation Plan and Benefits Realisation Plan to be compiled and provided to SWLEP no later than November 2020 for further review by the Independent Technical Assessor.

# People Friendly Salisbury FBC Paper 8.3, Page 43

*For approval*



## Key points

- Scheme designed to prioritise space for pedestrians and cyclists in the centre of Salisbury via the use of experimental Traffic Regulation Orders (ETRO).
- Scheme adopts technology already used in cities in the UK and Europe and could be assessed as a pilot for further rollout.
- Scheme cost £3.105m, proposed LGF allocation £1.3m.
- Highways England are fully engaged. Wiltshire Council seek further funding from DfT via the Emergency Active Travel Fund (EATF) but will underwrite full project costs should this bid be unsuccessful.
- Specialist Transport ITA review advises BCR of 3.5 which is considered High Value for Money.

## Recommendation

- SWLEP Board to approve with two conditions, that are fully stated within the LGF Grant Agreement:
  - Full tender prices and final scope of project to be provided to SWLEP no later than November 2020; and
  - a detailed Monitoring and Evaluation Plan and Benefits Realisation Plan to be compiled and provided to SWLEP no later than November 2020 for further review by the specialist Transport Independent Technical Assessor.



# Highlight Reports Paper 8.4, Page 47

*For approval*



# Summary

28 live projects and includes three DfT projects.

Green	Amber Green	Amber Red	Red
<b>13</b>	<b>9</b>	<b>5*</b>	<b>1</b>

\*includes two DfT projects – White Harte Junction and Southern Connector Road.

<b>Red</b>	A350 Yarnbrook
<b>Amber Red</b>	Chippenham Station Hub The Maltings/River Park Ultra-Fast Broadband
<b>Amber Green</b>	Recycling Technologies Illuminating Salisbury
<b>Green</b>	Swindon Cultural Quarter