

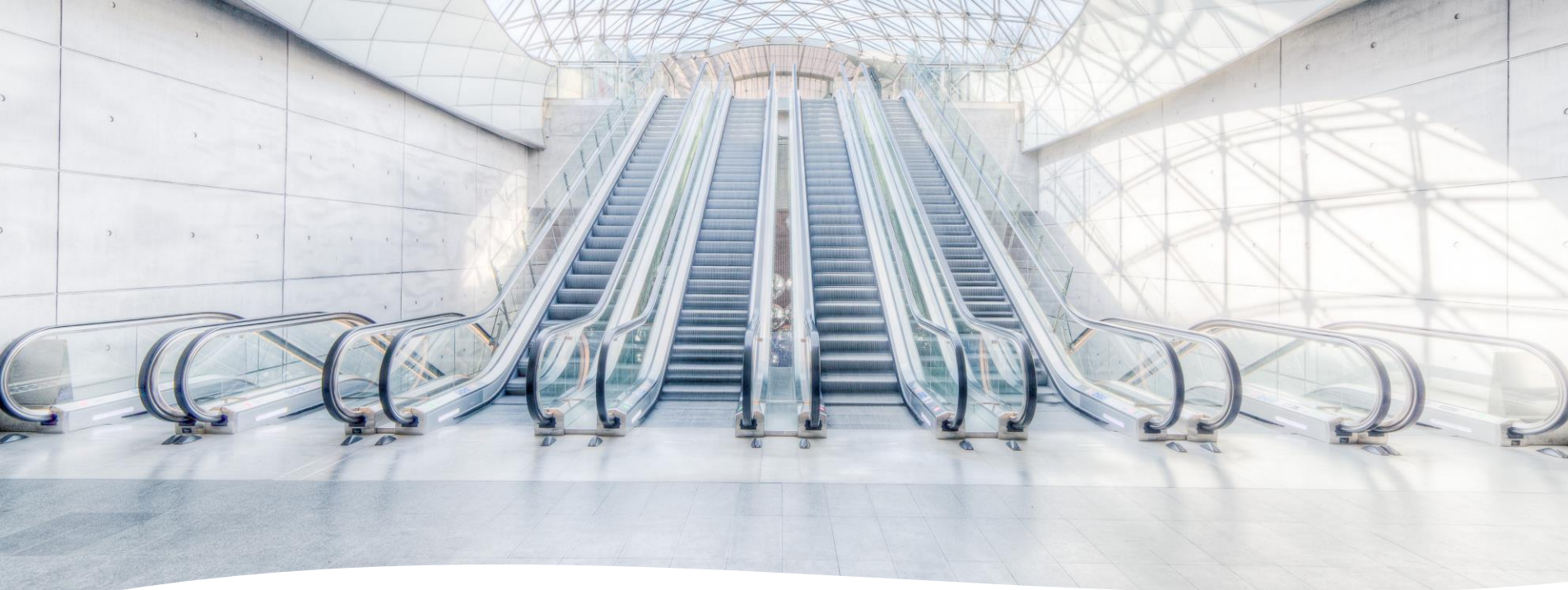


Swindon & Wiltshire
LOCAL ENTERPRISE PARTNERSHIP

SWLEP Governance Structure Update

Debby Skellern, Director of Strategy and Policy
25 March 2021





Mobilising the governance structure

- Joint Scrutiny Panel deep dive into the Growth Hub
- SWLEP Limited membership campaign
- Request for Board Directors to volunteer for the Committees and Subgroups

Membership

- Active participation in SWLEP's Annual General Meeting
- Annual Growth Summit
- Potentially the independent scrutiny of the SWLEP's activities and involvement in Subgroups
- Local business reference point and advocate





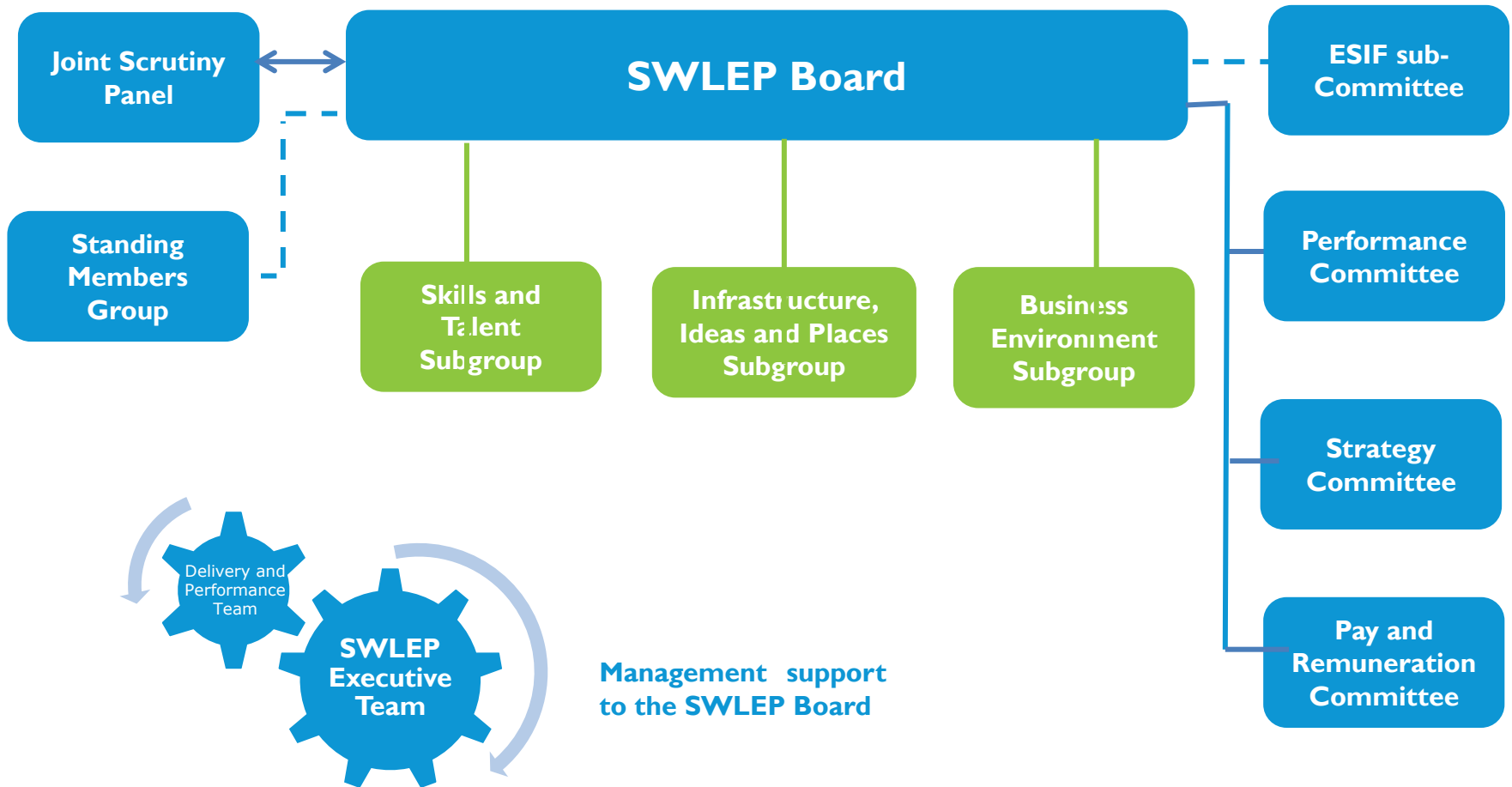
Membership campaign

- Article in the Business Exchange April/May edition
- CRM direct email April and October
- Online application form



Board Governance Structure

December 2020





Group	Directors	Status
Skills and Talent Subgroup	Amanda Burnside, Doug Gale, Carole Kitching, Paddy Bradley	✓
Infrastructure, Ideas and Place Subgroup	Pam Webb, Suzanne Wigmore, Paddy Bradley	✓
Business Environment Subgroup	Alison North, Ian White, Paddy Bradley	✓
Strategy Committee:	Subgroup Chairs of the subgroups above Paul Moorby, Philip Whitehead, David Renard, Paddy Bradley	✓
Performance Committee	Mandy Clarke, Suzanne Wigmore, Paddy Bradley, (S151 Officer)	X -3
Pay and Remunerations Committee	Mandy Clarke, Paul Moorby, Alison North, Pam Web, Paddy Bradley	X -1
Business Cyber Centre Steering Group	Mandy Clarke, Andrew Gudgeon, Nev Holmes, Carole Kitching, Paddy Bradley	✓



Growing Places Infrastructure Fund Working Group

- Revolving loan fund
- Rolling open call process
- Aligned to Local Industrial Strategy priorities
- Supported by professional services representatives
- **Two Board Director vacancies**

Recommendations

1. Note the level of volunteer vacancies remaining in order to mobilise the governance structure; and
2. Note the promotional campaign to recruit additional members to SWLEP Limited.