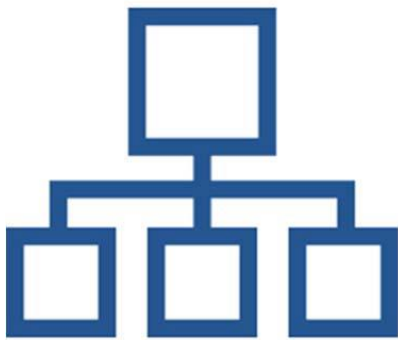




Section D: Scheme of Delegation

July 2020



SCHEME OF DELEGATION

Scheme of Delegation

1. Delegation of actions and decisions by the Board may only be made in accordance with the Constitution and this Scheme of Delegation.
2. Where the Chair is absent or unavailable, the Vice Chair may act in their place.

Standing authorisations to the SWLEP CEO and the Chair: day to day management

3. The SWLEP CEO is authorised to take such decisions as are necessary to enable her/him to carry out ongoing planning and administration tasks in relation to work already authorised by the Board within its business plan or by subsequent decisions of the Board. This includes liaison with Unitary Authorities and other stakeholders, making arrangements for Board meetings and other agreed activities and other decisions or actions which are required to implement decisions of the Board or support ongoing activities.
4. Any significant difficulties or complaints arising from use of the authority in paragraph 3 shall be reported promptly to the Chair in the first instance.
5. The SWLEP CEO shall provide a report to each Board meeting as required in relation to any significant issues or difficulties in relation to the use of the authority in paragraph 3 and shall provide further information about his/her actions on request from the Chair of the SWLEP Board.
6. The Chair is authorised to take day to day decisions in relation to the management of the work of the SWLEP CEO, and to provide financial authorisations to the SWLEP CEO as provided for in the Finance and Commissioning Policy (Section E).

Individual delegations of decision-making

7. The Board may delegate authority to the Chair to take a specified decision on behalf of the Board on an exceptional basis where it determines that such decision or action must be taken urgently prior to the next scheduled Board meeting and it will not be practicable or appropriate to arrange an additional meeting of the Board to take the decision (whether in person or virtually as provided for in paragraph 23 of the Constitution, Section B).

8. The Chair has the power to suspend a Board Director who is subject to a complaint pending the outcome of an investigation into that complaint in accordance with paragraph 12 of the Conflict of Interest Policy (Section C).
9. The Chair shall report to the Board at its next meeting on any decisions or actions made under a delegation within paragraph 7.
10. The Board may delegate authority to a Board working group, as defined in paragraph 13, on an exceptional basis to take specified decisions on behalf of the Board where the Board determines that such decision or action must be taken urgently prior to the next scheduled Board meeting and it is appropriate for it to be delegated to the Board working group rather than convening an additional Board meeting (whether in person or virtually as provided for in paragraph 16 of the Constitution).
11. The terms of any delegation under paragraph 10 shall be clearly minuted, including the scope of the Group's authority and activities and the extent to which it is authorised to take decisions on behalf of the Board.
12. The Board working group shall report to the Board at its next meeting on all decisions or actions made under a delegation within paragraph 10.
13. The Board working group is a group of Board Director (minimum of two) and such other Board members as the Board considers appropriate.

Authorisation of actions to implement Board decisions

14. The Board may ask the SWLEP CEO, individual Board Directors, Standing Members Group, any Board Sub-Group or other working group of the Board to carry out specific tasks or actions which implement decisions taken by the Board, where it considers that this will facilitate the performance of the SWLEP's activities within its Role and Governance Principles (Section A).
15. The Board may ask other individuals or organisations to carry out specific tasks or actions which implement decisions taken by the Board where it considers that this will facilitate the performance of the SWLEP's activities within its Role and Governance Principles and in accordance with the SWLEP's Finance and Commissioning Policy.

16. A Board Sub-Group shall only carry out such activities as are specified within its terms of reference as agreed by the Board under paragraph 32 of the Board Constitution (Section B) or amended by the Board from time to time under paragraph 14.

17. Where any matter is delegated under paragraphs 14 or 15, this shall be subject to the requirement that the person or group given delegated authority shall provide appropriate reports on their activities to the Board on request and in accordance with the SWLEP's Assurance Procedures.