



Swindon & Wiltshire
LOCAL ENTERPRISE PARTNERSHIP

Annual Report **2019**



Contents



Foreword from the Chair	4
Our vision and investment	7
A note from the Director	10
Review of 2018/19	14
Our area's economy in 2018	16
Meet our Board Directors	18
2018/19 Financial Statement	20
Our investment priorities	
- Skills & talent	22
- Infrastructure	24
- Business development	26
- Economic shocks	28
- Accountability & transparency	30
- European Structural & Investment Fund (ESIF)	32
Looking ahead	36
Get involved	39

Foreword from the Chair

Supporting Salisbury out of crisis and into a positive future.

SWLEP moves to Incorporation, opening up new opportunities for bringing in investment without reliance on the UK Government chequebook.

Working with Honda to create the best outcome for the site and its staff when they leave Swindon in 2021.

Creation of a new Local Industrial Strategy, shaping a prosperous economic future for our area.



2018/2019 has been a challenging yet exciting time for Swindon and Wiltshire.

No one could have prepared for the events that unravelled in Salisbury and Amesbury in 2017, but it was the combined response that made the city and the wider area stand strong. Salisbury City Council, Wiltshire Council, the SWLEP and many other organisations came together to support the people of Salisbury and help them move on from what was a horrific incident that had a major impact. We can see that we are now heading into a positive future.

We have supported the city's businesses financially, with over £100,000 in grant funding allocated to help them grow and prosper. Other developments

we are working on, including the redevelopment of the Maltings in Salisbury city centre, will over the next few years further rejuvenate the area with over £6 million allocated.

I'm proud that this year we've made further steps to be seen as a business-led organisation. The Board agreed to set up an incorporated structure in September 2018. A business but not-for-profit company limited by guarantee. We incorporated on 14th January and took over full responsibility from 1st April 2019. Our first Board meeting as a limited company was in May, and following a recruitment campaign we have now appointed seven Directors. This structure gives us much more freedom to put in

motion what the business community wants to see happen. We are looking forward to working together as a new team, with a more diverse skill-set to further cement the bright future for our area and the part it plays in making the UK economy a success.

A major project this year has been the foundation work in preparation for our Local Industrial Strategy. A huge amount of work has been done; the South West Rural Productivity Commission, the South West Science and Innovation Audit, the Swindon and Wiltshire Local Economic Assessment, the Higher Education Strategy, Apprenticeship Strategy, Digital Capabilities Strategy, Cyber Resilience and Science, Energy and Rail Strategy.

All of which lay the foundations for the conclusions that we are drawing about what we need to include. The plan is to agree these with Government by the end of September 2019. So far, our strategy is receiving compliments from central Government for its thoroughness.

Honda's move to pull out of Swindon is disappointing, but the decision has been made and we need to look to building a new future. I would like to play tribute to the previous Secretary of State, Greg Clark, for his direct involvement in the process and his willingness to draw all parties together to make sure we move forwards in the most constructive way, both initially for the associates and the supply chain. The Honda site creates



a huge opportunity for Swindon and Wiltshire and is a great magnet to attract investment, which we hope will be around advanced engineering and digital industry of the future.

I am passionate about supporting the 29,000 registered businesses in Swindon and Wiltshire. The vast majority of these are micro, or small to medium-sized enterprises which provide the backbone to the £19 billion economy generated locally. Brexit is continuing to bring unknown challenges and business resilience is key. My message to you all is to have confidence, aspire to be the best and use all the resources you can to keep up to speed and at the cutting edge of what you do. Look to us for help and

support and make use of the Swindon & Wiltshire Growth Hub created for you. I encourage you to be proud and shout when you can about the great things that happen here and the fantastic place it is to do business.

John Mortimer, Chair
Swindon and Wiltshire
Local Enterprise Partnership, July 2019

The Swindon and Wiltshire Local Enterprise Partnership (SWLEP) champions local, sustainable, economic growth. We are committed to investing in an infrastructure that supports business and our communities for a bright future. Our vision is for Swindon & Wiltshire to be world-renowned for innovation and entrepreneurialism and a great quality of life by 2026.

By looking holistically at our area's key strengths and weaknesses we have created an investment plan that will benefit all. We are investing in education, transport links, high quality business space and ultra-fast broadband connectivity to heighten our region's appeal.

A key strength is our area's transport and communication assets. Dominated by the M4 corridor, the area provides rapid east-west connectivity to London, the West County and Wales. It is also close to important transport hubs such as Bristol Airport, Heathrow Airport and major ports at Avonmouth, Southampton and Poole.

However, we can't rest on our laurels. Our rail and highways infrastructure projects look to strengthen Swindon and Wiltshire even further, investing in areas not so well connected and looking at new rail routes such as a new link to Southampton Airport and the case for adding new railway stations in areas such as Corsham, Porton Down and Swindon.



*Total investment from Local Growth Fund to date

A note from the Director



KEY POINTS FROM 2018/19

£100,000 allocated to support Salisbury businesses.

£8.7 million Growing Places Infrastructure Fund starts making a difference.

Completed Rail Infrastructure Strategy.

Go-ahead for Swindon Institute of Technology.

£1 million 'Ultra-Fast Broadband' funding programme.

Successful conversion of Corsham Digital Mansion.

Completion of the Wilton Enterprise Hub.

The last 12 months have really shown the united front, passion and commitment the SWLEP and our partners have for Swindon and Wiltshire.

We recognised early on that the attack in Salisbury would have an impact on business, and I think the approach taken was a good example of the public sector and partners pulling together as a community. A structured response helped this emergency situation. It was well-led by Wiltshire Council and Salisbury City Council, who worked together with Government departments. The output now is that Salisbury is picking up and numbers are looking better in terms of footfall and spend in the city. There are still challenges but there is a really good local and national

commitment to build on Salisbury and improve it for the future.

I'm excited that the Growing Places Infrastructure Fund for Swindon and Wiltshire is now making a difference. This £8.7 million 'revolving', local, low interest loan pot has benefitted three firms so far, Chippenham's Woods Group, Swindon's Recycling Technologies and Our Wilton Community Interest Company. We are also in the process of allocating loans to other businesses. The loan fund is now available as a constant open call and so if you are interested, please get in touch.

We have recently completed our rail infrastructure project. This looks at priority areas for new services and potential new stations. The idea is to further improve

our transport infrastructure with the best deliveries of economic gain in return for the investment.

I was delighted that our £21 million Swindon Institute of Technology (IOT) bid to Government was successful. The focus of the IOT is level 4+ technical qualifications with engineering included, along with aspects of digital technology and life sciences. The capital investment will enable businesses to have appropriately skilled and competitive workforces to support growth, innovation and creativity when it completes in 2021.

Our Growth Deal Programme is currently on track to have full expenditure by 2021. Recently completed projects include the Digital Mansion House in Corsham, an

incubation space for businesses working within the digital or innovation sector, as well as the Swindon Sustainable Transport cycle way and the extension of the dualling of the A350.

Investment in high speed connectivity is key to our future and as part of the Growth Deal we've invested in Ultrafast Broadband. We've invested £1 million into this and the Department for Digital, Culture, Media and Sport have invested £2 million. The programme is being run by Wilts Online and has two projects, one in the North of Wiltshire and one in the South. They have tendered out contracts and are being run by Gigaclear (North Wilts) and BT Openreach (South Wilts). They are on track to deliver by 2020 and this will bring ultra-

A note from the Director (continued)

“New business network for 18-35 year olds”



Case study: Young Enterprise Swindon (YES)

fast broadband supplies more than 100mb per second, in selected areas.

Last year's Swindon & Wiltshire Business Growth Summit at Longleat was fantastic and a real highlight for me. Our plans for our 2019 Business Growth Summit are even bigger and we can't wait to better the success of 2018's event.

I'm proud that the reputation of the SWLEP has grown in the last year. Moving into not-for-profit, limited by guarantee, has been a good move. We're demonstrating that we want to use that status to get involved in different ventures and be more commercial in what we do. We've reached out to more businesses, more people, and it's great to feel that

we're making a bigger contribution to the economy. The ambition for the coming year is to grow that even more, getting further people involved, upskilling them for a challenging business environment and ultimately helping more businesses be resilient at this time. This is why the theme of our 2019 conference is 'Growth from Resilience'. The day is set to inspire and I hope to see you there.

Paddy Bradley

Paddy Bradley, Director

Swindon and Wiltshire
Local Enterprise Partnership, July 2019

With start-ups on the rise, Swindon and Wiltshire offers a great environment for young entrepreneurs to start a business.

The Growth Hub, working with partners Business West and The Business Exchange, launched YES, a business network for young people (18-35). Aimed at young professionals and students, the network brings together like-minded people in a relaxed environment, to connect, socialise, share knowledge and ignite ideas.

As hoped, YES has evolved and ownership has now been taken by the young entrepreneurs themselves. They created the group's brand identity and organise networking events, guest speakers and event promotion. The ultimate aim is to take the network in a direction that will

best benefit the economic growth of young entrepreneurs in the area.

Its founders Ben Lawton and Dan Pettitt have been involved in the project from the beginning alongside Matt Greenwood, owner of Desk CoWork where the event is being hosted.

Dan Pettitt, said, "YES is a great place for like-minded individuals (not just entrepreneurs) to come together and collaborate, share ideas and just have a good time. We've been to so many networking events and felt like it was always an 'old boys club' – YES is striving to strike the hearts and accelerating ambitions behind the youth of today."

Review of 2018/19

Delivering our Growth Deal Programme



Digital Mansion, Corsham

Completed refurbishment of the Corsham Mansion House to create an incubation space for businesses working within the digital or innovation sector.

Total investment: £3.9m

Swindon Sustainable Transport

Over 6km of new cycleways across the Swindon area, providing safe and efficient routes for cyclists to get around the town and its outlying suburbs.

Total investment: £4.375m

Extended Dualling of the A350

Conversion of the A350 into a dual carriageway around Chippenham extended to include the area around the A4, Bath Rd interchange.

Total investment: £7.247m

Growing Places Infrastructure Fund (GPIF)



Loaned £2.25m from the Growing Places Infrastructure Fund in the last year:

► Recycling Technologies, Swindon

£1m GPIF loan awarded to accelerate delivery of plastics recycling machines.

► Our Wilton Community Interest Company, Salisbury

£1.25m GPIF loan awarded for the construction of a new Enterprise Hub.

Institute of Technology



Worked with Swindon College, the anchor employers, universities and other local Further Education colleges on a successful £21m bid to Government for an Institute of Technology.

Refreshing our Governance Framework



- We have committed to meet the Government targets on Board representation and by 2020 at least 30% of our members will be women, rising to 50% by 2023;
- We have a designated equality champion on our Board alongside our existing SME champion; and
- We have incorporated as a company limited by guarantee to meet Government expectations that all LEPs should have a legal personality.

Allocating our European Structural & Investment Funds (ESIF)



- Over 5,500 people helped to achieve better skills and lifelong learning by the ESIF programme in the area.
- Over £0.5m of small grants made to local small firms for productivity, innovation and exporting.
- Over 4,000m² of new workspace opened at Porton, Swindon and Salisbury.
- More than 800 SMEs supported for productivity, competitiveness and innovation.
- Programme set to run to 2023 investing over £40m of European funds into Swindon and Wiltshire.

Local Industrial Strategy (LIS)



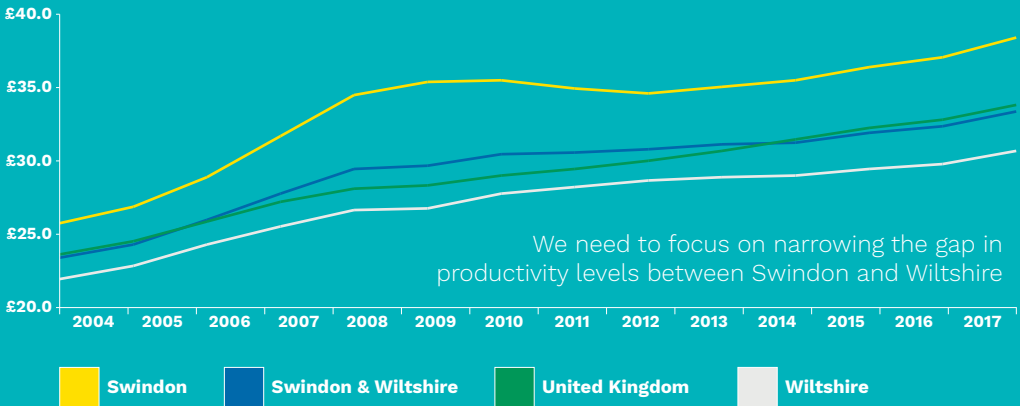
We have engaged with 1,000 businesses and organisations and over 1,000 young people and adult learners to gather their views and trial ideas in response to the UK Industrial Strategy focus on foundations of productivity and grand challenges. The following strategies and reports can be found on our website:

- Swindon and Wiltshire Local Economic Assessment
- Higher Education Strategy
- Apprenticeship Strategy
- Digital Capabilities Strategy
- Energy Strategy
- Cyber Resilience
- Rail Strategy
- South West Rural Productivity Commission.

Our area's economy in 2018

GVA grown to **£18.4bn** in 2017

GVA p/hr worked across Swindon & Wiltshire



10th largest growth in England

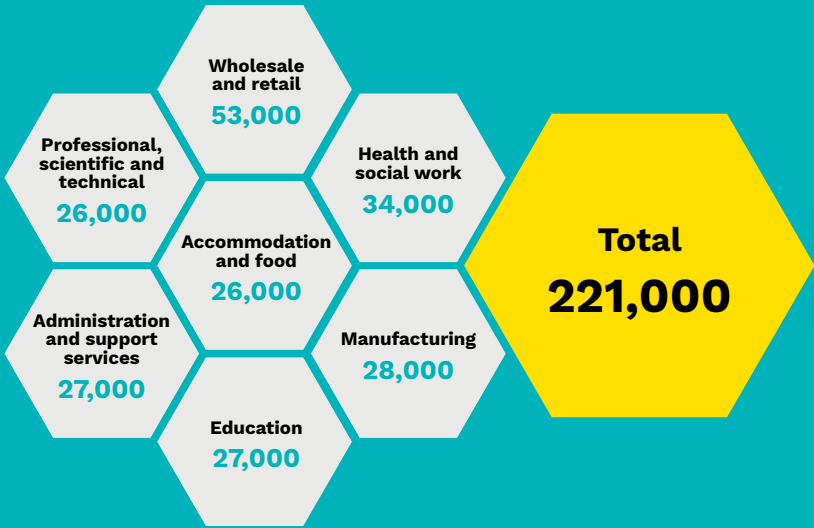


Swindon and Wiltshire's economy is worth over £18bn a year growing by over 2% between 2016 and 2017. This has put us amongst the top ten in England. In addition, 82% of our working age population is economically active. In the **2018 Good Growth for Cities Report**, Swindon ranked 7th in the Top 10 Highest Ranking Cities in the UK and is the 9th most improved place in the country with Wiltshire scoring above the national average for well-being and life satisfaction.

According to PWC's Good Growth Index, Swindon and Wiltshire has made the greatest improvement of all Local Enterprise Partnerships between 2014 and 2017. This recognises the thriving economy that we have in Swindon and Wiltshire and the good

quality businesses that are based here. As a partnership we are developing our Local Industrial Strategy with Government to ensure that we continue to support sustainable and inclusive economic growth and increased productivity. To guide us in this delivery we have developed an extensive evidence base and have a number of strategies in place including Higher Education, Digital Capabilities, Cyber Resilience, Energy, Rural Productivity and Rail. These will underpin our Local Industrial Strategy which will showcase the established and productive sectors and innovative businesses that help distinguish our area. They are part of making the UK a global leader in the industries of the future as well as identifying where we need to focus our attention over the next 10-15 years.

Largest sectors by employment 2017



Meet our Board Directors



John Mortimer
Chair & SME
representative, SWLEP



Peter Wragg
Deputy Chair, SWLEP
Chairman, Visit Wiltshire Ltd



Amanda Burnside
Principal, Wiltshire College
& University Centre



Mark Smith
CEO, WRc



Col Andrew Dawes
South West Commander



Paddy Bradley
Director, SWLEP



Alex Reed
Finance Director,
Catalent Pharma



Doug Gale
Director (Strategic)
QinetiQ plc



David Renard
Leader, Swindon
Borough Council



Carole Kitching
Principal, New College Swindon



Becky Middleton
CEO, Middleton Solutions



Keeran Vetriko
Managing Director, JERES



Paul Moorby OBE
Managing Director, Chipside Ltd



Andrew Gudgeon OBE
Nationwide Building Society



Alison North
Founder, AN Information

The SWLEP board is business-led and chaired by John Mortimer. It's supported by a small core team headed by Chief Executive, Paddy Bradley, to coordinate delivery across our partners of our Skills and Talent, Transport, Digital Capability, Place Shaping and Business Development projects. Our constitution allows for a board of up to 20 Directors with at least 70% being from the private sector.

Our Board has 17 Directors, 15 from the private sector and two from the public sector, which are representatives from Swindon Borough Council and Wiltshire

Council, whose administrative areas make up the geographic area of the SWLEP, together with a cohort of observers and advisors.

Board Directors do not receive any payment for being a member of the Board although they can claim expenses associated with their role. The Chair of the SWLEP is entitled to receive an allowance of £10,000 per annum. This payment is intended to recognise the time commitment involved in delivering the role set out in our Governance Framework. For more information visit our website.



Mandy Clarke
Founder, Accomplish HR Ltd



Philip Whitehead
Leader, Wiltshire Council

2018/19 Financial Statement



	Brought forward 2017/18	Income 2018/19	Sub total	Expenditure 2018/19	Roll forward 2019/20
GPIF Capital	£7,397,000	£300,000	£7,697,000	£500,000	£7,197,000
LGF	£0	£20,870,200	£20,870,200	£14,438,300	£471,300
Non LGF Capital Programme				£5,960,500	
LGF Retained	£554,500	£510,000	£1,064,500	£1,535,800	-£471,300
Total Capital	£7,951,500	£21,680,200	£29,631,700	£22,434,600	£7,197,000
Core Funding	£154,200	£744,600	£898,800	£752,000	£146,800
Additional Capacity Funding 18/19	£0	£200,000	£200,000	£0	£200,000
Skills Analysis Panel Grant	£0	£75,000	£75,000	£0	£75,000
BEIS Energy Support	£0	£40,000	£40,000	£34,100	£5,900
GPIF Revenue	£479,700	£46,900	£526,600	£115,700	£410,900
Higher Futures	£504,400	£300	£504,700	£223,000	£281,700
Growth Hub	£0	£205,000	£205,000	£205,000	£0
Careers and Enterprise Company	£0	£225,600	£225,600	£128,400	£97,200
Total Revenue	£1,138,300	£1,537,400	£2,675,700	£1,458,200	£1,217,500

In accordance with the guidance from MHCLG, the total Local Growth Fund grant for non-retained schemes has been spent on capital projects in 2018/19. The SWLEP and its accountable body have the authority to manage the programme and funding across financial years providing that the grant is spent on capital projects in each financial year. To manage the full allocation in 2018/19

£5,961 was badged against the accountable body's capital programme and will be made available to the SWLEP for LGF schemes in 2019/20. Some of our allocated grant is under the control of the Department for Transport (DfT); £57.5m of our £165m Local Growth Deal fund has been awarded to four schemes that they are obliged by Government to retain control of.

Skills & talent



John Glen MP visits Salisbury Campus



Salisbury Campus redevelopment, phase 2 launch



Enabling businesses to have appropriately skilled and competitive workforces to support growth, innovation and creativity remains a significant investment priority for the Swindon & Wiltshire Local Enterprise Partnership. Employers continue to tell us that developing a workforce with a higher level of skill will help them stay competitive and achieve the growth they need.

Institute of Technology

Swindon's bid for a £21m Institute of Technology (IOT) was one of 12 confirmed by the Government in Spring 2019. The IOT project is being led by Swindon College working with anchor employers Nationwide, Catalent, Excalibur, Bath ASU, Patheon, Recycling Technologies,

Appsbroker, Create Studios, the Universities of Gloucester and other partners, Oxford Brookes, New College Swindon and Cirencester College. The project is likely to be completed in 2021 and will lead to a significant upgrade at the North Star site in Swindon and Cirencester College. The focus of the Institute is level 4+ technical qualifications with engineering included, along with aspects of digital technology and life sciences.

Higher Futures

There is no university which calls Swindon and Wiltshire its home, but there is a higher education offer. Apprenticeships through to MBA/Level 7 are heavily subsidised by the government and employers paying the

apprenticeship levy. The 'Learning Hub' provides a one-stop-shop for local and regional HE courses. It's designed to enable people to browse courses and enrol with their chosen provider. It's currently reaching its final build stages and is anticipated to launch during the autumn of 2019.

Skills Advisory Panels

Following national guidance for Skills Advisory Panels published in December 2018, our established Skills and Talent Subgroup is adapting to reflect the new requirements. Its purpose is to bring together key stakeholders to understand local skills and labour market needs and develop effective strategies to address challenges to future proof productivity

Higher Futures



Skills support
(Number of businesses supported)

Skills support to business	322	Learning on programme	837 Total
			543 at higher level

Outputs
(Number of businesses supported)

in the area. The panel will also advise on potential investment decisions for local skills and employment provision, oversee implementation and ensure a robust Skills Plan is in place.

Careers Hub

The Swindon and Wiltshire Careers Hub has been working with 40 schools and colleges across the area, on developing good practice and widening provision in careers information, advice and guidance. We've secured further funding from September 2019 allowing the remaining 16 institutions in the Swindon and Wiltshire Enterprise Adviser Network to join the Careers Hub.

Infrastructure



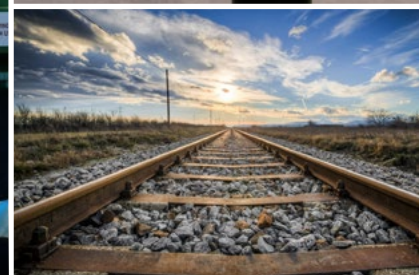
Digital Mansion, Corsham



Launch of Salisbury Campus redevelopment project



Local Sustainable Transport in Swindon



A350 Chippenham Bypass Dualling

2018/19 has been another positive year for delivery of key infrastructure projects funded by the Swindon & Wiltshire Local Enterprise Partnership, with over £15m being spent in the year on projects to support sustainable economic growth in the area.

During the course of the year, we have seen completion of the extensive refurbishment work at the Mansion House in Corsham which is now being branded as 'Digital Mansion, Corsham'. This £3.9m project has transformed the building into an incubation centre for small and growing businesses in the digital sector, supporting the growth of this market in the area, as well as creating 144 new jobs.

We have also seen the completion of a

sustainable transport project in Swindon. This has involved a £3.75m investment to deliver over 6km of new cycle ways across the Swindon area, providing safe and efficient routes for cyclists to get around the town and its outlying suburbs. The project has also delivered three new pedestrian crossings and has worked with a variety of schools to develop sustainable transport plans for the families and staff travelling to school.

Thanks to £7.1m of SWLEP funding, the conversion of the A350 into a dual carriageway around Chippenham has now also been extended to include the area around the A4, Bath Rd interchange. This will improve traffic flow around the town, and between Corsham and

Chippenham, supporting both businesses and commuters in the area.

Other projects are making good progress, with the external and internal refurbishment work at Wiltshire College's Salisbury campus completing ahead of schedule. In May 2019, Peter Wragg, SWLEP's Deputy Chair, joined the college's principal, Amanda Burnside, and John Glen MP at the launch of the demolition of one of the college's older buildings to make way for construction of the a new life sciences, engineering, construction and Higher Education Centre. This will enable an additional 1,500 students to study at the campus each year.

Planning permission has been obtained to begin construction of a new car park

at the Saddler's Mead site opposite Chippenham Station to enable increased use of the rail services. Funding has also been allocated to a number of projects in the Salisbury area, including initial work on a state-of-the-art network of illuminations for the city and development of the Fisherton St area of the city.

We are also about to publish a Rail Strategy that maps out the development of infrastructure improvements in the area, but also what rail services are needed to connect the area to other high performing economies.

Business development

Total investment

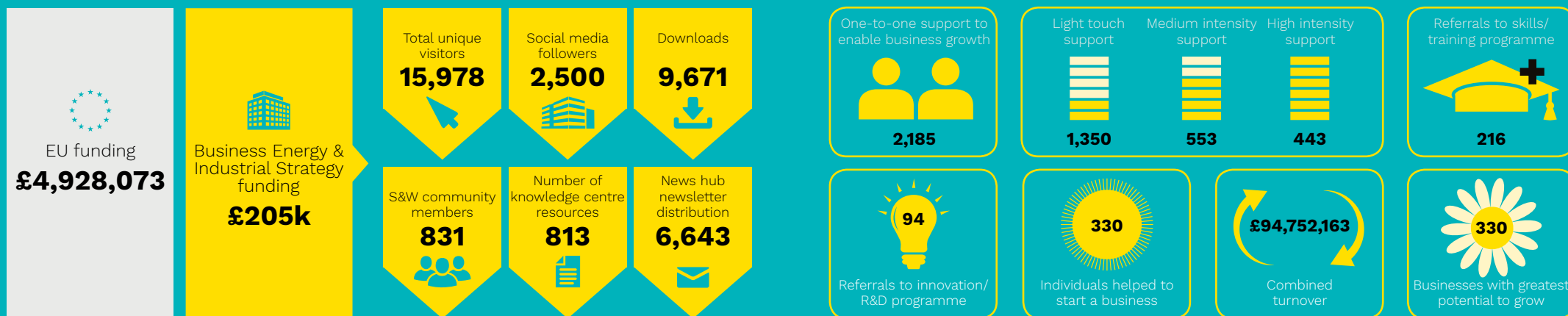
2018/19

Digital engagement

SWGrowthHub.co.uk

Face-to-face business support

received from the Swindon & Wiltshire Growth Hub



Swindon & Wiltshire Growth Hub

Business support is the foundation to achieving economic growth.

Our Growth Hub continues to invest in offering information, advice, guidance and signposting businesses to the most appropriate and effective support available. This includes specialist Business Advisers within the SWLEP.

Here are some of our 2018/19 highlights of how we have supported business growth in Swindon and Wiltshire:

► Total investment this year:

£205k

► Face-to-face intensive assist

support (12 hours or more): Has risen from an annual reported figure of 140 businesses in 2016-17, to 443

businesses in 2018-19. Start-up businesses supported has risen from 49 to 330.

► Further enrichment of the online portal:

It has been updated with extensive, high-quality and easily accessible information, advice and guidance, including tools such as Grantfinder.

► Submission of an outline £2.4m bid:

To enrich the face-to-face service, providing an account managed journey for businesses. An invitation to proceed to full application is currently being progressed.

► Business marketplace development:

Creating an online marketplace for businesses to promote themselves with

exclusive offers for members of the Growth Hub community.

► Supporting South Wiltshire and Swindon:

In their recovery from economic shocks: our Growth Hub digital portal provides an information gateway for businesses and a microsite is being developed to support Honda's workforce and local supply chain.

► Growth Hub online business community membership:

In the last year, membership has doubled to more than 800 business members who share best practice, information and events.

the last year, including a £1m loan to accelerate delivery of plastics recycling machines at Recycling Technologies in Swindon and a £1.25m loan to Our Wilton Community Interest Company for the construction of its new Enterprise Hub.

The SWLEP Board has also re-allocated £1.1m from its Local Growth Deal fund to support projects proposed by the South Wiltshire Operations Board which meet the economic outcomes sought by the SWLEP.



Artist's impression, Our Wilton's new Enterprise Hub

Growing Places

The SWLEP loaned £2.25m from the Growing Places Infrastructure Fund in

Economic shocks



Honda plant (Photo: Dave Cox)



90 umbrellas float above Salisbury High Street in art spectacular

The economy of Swindon and Wiltshire has demonstrated commendable resilience having experienced two economic shocks in a year. Two major incidents were declared in Salisbury and Amesbury in 2018 and in February of this year Honda Manufacturing UK announced its plans to close its 370 acre site in Swindon in 2021.

In South Wiltshire the SWLEP invested an initial £100,000 for capital grants to support businesses in their recovery; including enabling them to refurbish and redevelop their premises and purchase equipment.

We are also investing over £6m to transform The Maltings in Salisbury, and over £13m in the development

of the Wiltshire College & University Centre campus. Businesses in parts of South Wiltshire are also benefitting from a proportion of a £1m investment in a roll-out of ultrafast broadband. A further £1.1m has been committed to support projects proposed by the South Wiltshire Operations Board which meet the economic outcomes sought by the SWLEP. The SWLEP is also launching a £500k loan fund particularly aimed at small businesses in Salisbury.

The impact of Honda UK's announcement is being felt deeply within the community of Swindon and surrounding areas. Over the last 30 years more than 3 million cars have been manufactured at the site and the plant

employs 3,500 people. This is a decision with a national impact too, accounting for up to 10% of UK car manufacturing and the associated supply chain that employs 10,000 people nationally.

The SWLEP is working closely alongside Government, Swindon Borough Council and local partners to help deliver a plan of support for employees and businesses in the area. Our aspiration is for the site to become home to several advanced manufacturing businesses and diversifying the economy as well as increasing productivity.

In Swindon and across the UK, we have some of the best talent in the world and the Government is already investing in future car manufacturing, batteries and

electrification infrastructure to ensure the UK retains its world-leading edge.



Artist's impression of the redevelopment of The Maltings, Salisbury



John Mortimer & Lord Henley visit Zizzi, Salisbury

Accountability & transparency



It has been a busy year responding to Government's 'Strengthening Local Enterprise Partnerships' review (July 2018) and as a result of its recommendations SWLEP acquired a legal personality and became incorporated as a company limited by guarantee in January 2019.

SWLEP will continue to hold its Board meetings in public and remains one of only a handful of LEPs across England who operate in this way. We value the input and support we have received from the public and local stakeholders to date and look forward to working with them over the next year.

We also refreshed our Governance Framework in March 2019 to align ourselves fully with the government's latest

national local growth assurance framework guidelines. Our framework is published on our website.

In October we welcomed over 180 delegates to our Business Growth Summit which was held at Longleat. This not only gave us the opportunity to showcase some exceptional local business talent, but enabled attendees to hear from and question John Glen MP and to hear about some of the work SWLEP had undertaken to support businesses in the Salisbury and Amesbury area in particular.

In December we had our annual performance review with BEIS and during the spring we started work on writing our annual delivery plan for 2019/20.

We have a natural level of churn

amongst Board Directors and we commenced our Board recruitment process. We are keen to encourage greater female and BAME representation on our Board from 2019/20.





Delivering smart, sustainable and inclusive growth, the ESIF programme spent £5m on key investments in the area during 2018-19, funding a dozen or so projects and services that are improving the business environment, nurturing local people's skills and talents and promoting inclusion.

The multi-annual budget for the ESIF programme allows organisations to plan, develop and deliver their services, providing deep, enduring and expert support to firms, and assisting people coming back into the workforce with time and space that allows them to build their confidence and abilities.

More than 440 smaller firms were supported last year, with over 5,500 people helped to improve their employability

credentials and career progression through the lifelong learning programmes since 2017.

The Links to Work programme has improved the prospects of over 500 people by ending long-term periods of unemployment due to poor mental and physical health. Operated by FedCap, this service addresses debilitating health and welfare concerns and engages employers on recruitment drives, with its success due to its dedicated local leadership. Similarly, Building Bridges partners have transformed the lives of a large number of younger disabled people by helping them to access employment.

In 2018 the SWLEP moved to the second

phase of ESIF delivery, and since April 2019 a new workforce skills offer, delivered by Serco, has been prioritised by the SWLEP to address firms' digitalisation and leadership skills requirements. Wiltshire College commenced its Get Ahead project which helps young adults improve working skills and start apprenticeships, whilst community grants have begun to fund organisations able to help people most disadvantaged in the jobs market.

The European Regional Development Fund (ERDF) programme continued with a diverse range of projects, from an inward investment service to specialist support for SMEs on exporting, manufacturing, innovation and life-sciences. More than

£0.5m has been invested directly as grants to businesses. The programme has exceeded its targets by supporting more than 800 smaller firms, created in excess of 5,500m² of new workspaces and stimulated over 150 businesses to innovate and introduce new products and new operational processes. ERDF is making a significant contribution to local economic growth.

In 2019, the programme will fund a new project linked to the Growth Hub which prioritises start-ups and fast-growing businesses, alongside a separate project dedicated to growing the next generation of digital entrepreneurs.

*“GPIF loan
helps
fast-track
growth”*



Recycling Technologies' RT7000 machine, Swindon

*“Accessing
talent
development
and resource
support”*



Case study: Recycling Technologies

In February 2019, Recycling Technologies received a £1m Growing Places Infrastructure Fund (GPIF) loan to help speed up the production of its RT7000 machines, as well as stimulate innovation, growth and productivity gains.

Recycling Technologies has developed and patented a plastics recycling machine, the RT7000, that converts plastic waste back into oil called Plaxx® from which new plastics can be made. The machine heats up the plastic in the absence of oxygen to break the waste plastic down into Plaxx®. This process allows the RT7000 to recycle plastics commonly considered unrecyclable such as plastic film, and laminated plastics such as food pouches and even crisp

packets. These unrecyclable plastics are currently incinerated or buried.

Adrian Griffiths, CEO, said “We have a goal to triple Europe’s current plastic recycling capability by 2027 through the provision of 10 million tonnes of urgently needed new waste plastic recycling capacity. We believe our manufacturing facility here in Stirling Court, Swindon will be capable of manufacturing 200 RT7000 machines a year to meet the growing demand for plastic recycling capacity in the UK, Europe and the rest of the world.”

Case study: Alabaré

Where do you start, to maximise opportunities for Talent Development through Apprenticeships?

Through just one meeting, Higher Futures broadened the horizons of Alabaré Christian Care and Support, enabling them to access a network of training providers that could help them which could have taken them two years to establish themselves.

Alabaré Christian Care and Support is a cross-sector charity providing support to people including young people, veterans and the homeless; equipping and empowering them to live independently. They provide support to around 400 service users across the South West and Wales and employ around 300 people.

“Working with Higher Futures has made my job harder and easier. They helped

us re-evaluate everything we do and we identified gaps in our training provision. Higher Futures enabled me to quickly access a wide network of providers to develop the solutions we need. They provide a personal service and show commitment to us as an employer which for me is their biggest selling point. I would recommend Higher Futures to any employer that needs support in any area of talent development and resourcing support.”

Rob Gibson, Training Development Manager, Alabaré Christian Care & Support

Looking ahead



Artist's impression of Swindon Bus Boulevard



Artist's impression of the proposed Institute of Technology, Swindon

Working in partnership with



Preparing for Honda leaving Swindon in 2021

Ensuring there is a continued co-ordinated local response to Honda is important. The SWLEP will be particularly involved in what options there might be for the development of the sites, bearing in mind that they are owned by Honda and it's the company's decision what to do with them. We will develop and propose ideas to put to Honda.

We will also be supporting Honda's workforce, those that may be leaving, how they might get into new jobs, and helping them with any retraining or upskilling.

Ensuring the Honda supply chain is supported is also important, so we will be reaching out to see how we can help.

Investing in education

Creating a coordinated higher education provision is top of our agenda. Our target is to double the number of people doing higher and degree apprenticeships. We want to make a much better environment for students to come into the area and study and link it to jobs.

In the next year we will be looking at ways of achieving a business-led multi-campus federation of higher education provision for Swindon and Wiltshire.

Cyber & digital futures

We recognise that the digital economy and impact of digital technology on a whole range of business sectors is rapidly having an effect. Businesses with an electronic presence

are more likely to succeed. Our target is to expand the number of these businesses and provide the support to do this.

Keeping businesses safe online is also a major priority. We are looking to create a centre of excellence for cyber security which is driven by business.

Clean Growth

Clean Growth is an ambitious blueprint for Britain's low carbon future, decarbonising all sectors of the UK economy through the 2020s in an aim to have a zero-carbon emission economy by 2050.

The future of mobility is about going for zero carbon emissions and the SWLEP is majoring on how we can achieve this. Our unique Swindon Hydrogen Hub is at

the cutting edge of hydrogen and fuel cell technology and we will continue to support local businesses such as Arval and Johnson Matthey in Swindon which are paving the way for the future of this technology.

We plan to create a Clean Growth Package for new employment sites in Swindon and Wiltshire to ensure they are as green as possible.

Great West Way

VisitWiltshire is leading on developing a new touring route which will join up many of England's iconic destinations and attractions along a corridor west of London through to Bristol. This is one of a number of successful projects made possible by HM Government's £40m Discover England Fund,

Looking ahead (continued)



Nova Hreod Academy students at the launch of Arval's school education pack in partnership with Hydrogen Hub

administered by VisitEngland. The Great West Way is a fantastic example of inclusive growth and harnesses the natural capital of our region.

Local Industrial Strategy

By the end of 2019 we will have completed the Local Industrial Strategy. This will set the priorities and direction to lift our economy, giving us a horizon for 10-15 years of work. We are working closely with the other LEPs in the South West to ensure Swindon and Wiltshire has a strong identity and our plan and offering complements our neighbours, in a Western Powerhouse approach.

The outlook

We are living in uncertain times with the Brexit situation still being unclear. What we do know is that businesses in Swindon and Wiltshire are showing resilience. Wiltshire has a good survivability rate for SMEs, better than the national average, and this stands us in good stead.

By concentrating on improving our higher education provision and investing in our powerful sectors such as advanced engineering, manufacturing and digital, we will have a bright future. This, paired with our brilliant natural environment, is a great inward investment draw. Working together as a community in the coming years we have the ability to do great things.

Get involved

The SWLEP is a business-led partnership and we are keen to hear the voice of local business in taking forward the work we do. There are several ways this can be done:

Joining the SWLEP: At least 70% of the SWLEP Ltd Board Directors come from the private sector. From time-to-time we advertise vacancies on the Board. All businesses in Swindon & Wiltshire are invited to become members of SWLEP Ltd.

To apply please email:
administration@swlep.co.uk

Provide feedback: We are interested in your views about the work we do as well as how your business may be affected by national policies. You can get involved by attending our events, participating in our consultations and surveys on our website, or through responding to a direct request for feedback from us.

You can also provide us with feedback via our website
www.swlep.co.uk/contacts

Business case studies: If you have received support from one of the SWLEP programmes we would love to hear the impact it's had on the success of your business and how it has helped you address business challenges. Your case study could be an inspiration to many other businesses.

Business Support: Small and medium-sized businesses in need of investment can access information and advice through the SWLEP's Growth Hub.

To find out more visit:
swgrowthhub.co.uk or
contact Jo Minnaar, Growth Hub Manager, by emailing
Jo.Minnaar@swlep.co.uk

SWLEP newsletter: Subscribing to our newsletter is a great way to hear about the latest news on the SWLEP's programmes and events which could support your business and extend your business network within the wider business community.

To subscribe and get started, please email:
info@SWLEP.co.uk



Join us in growing our local economy

To receive regular updates on
SWLEP programmes, email:

info@swlep.co.uk

www.swlep.co.uk

01225 713205

swgrowthhub.co.uk

01225 402096



@SWLEP



Swindon & Wiltshire LEP



Swindon & Wiltshire
LOCAL ENTERPRISE PARTNERSHIP