



Our Mission

To **prepare** and **inspire** young people for the fast-changing world of work.



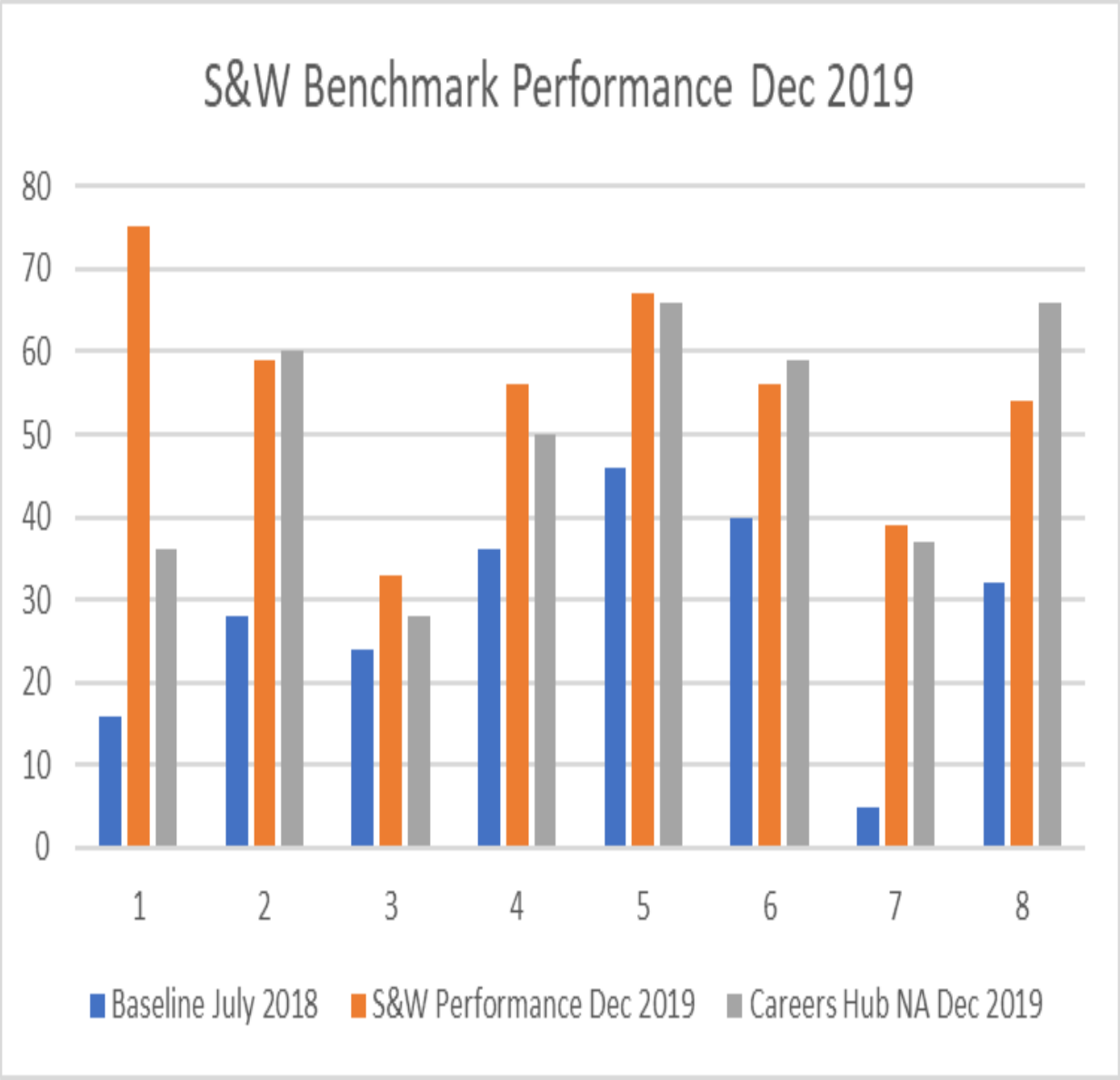
Swindon and Wiltshire Careers Hub

Careers Hubs are centres of careers education excellence across the country. The Swindon and Wiltshire Careers Hub works with 56 secondary schools and colleges across the region and 60 local employers.

1. Support schools and colleges to meet the Gatsby Benchmarks.
2. Provide bespoke support for individual Careers Leaders.
3. Support schools and colleges to access our network of Enterprise Adviser volunteers.
4. Provide a SEND Careers Working Group.

Gatsby Benchmarks

1	2	3	4
A STABLE CAREERS PROGRAMME	LEARNING FROM CAREER AND LABOUR MARKET INFORMATION	ADDRESSING THE NEEDS OF EACH PUPIL	LINKING CURRICULUM LEARNING TO CAREERS
5	6	7	8
ENCOUNTERS WITH EMPLOYERS AND EMPLOYEES	EXPERIENCES OF WORKPLACES	ENCOUNTERS WITH FURTHER AND HIGHER EDUCATION	PERSONAL GUIDANCE



Swindon and Wiltshire Enterprise

Adviser Network

Employer Engagement				
Apetito	Capita WFM	Freelance	Nationwide Building Society	SEQOL
Atkins Global	Cat Group Ltd	HRSupport4U	Network Rail	Siemens
Audience Systems	Center Parcs	IXYS UK Ltd	People Business Psychology Ltd	Spire FM
Barclays	Cross Manufacturers	Knorr-Bremse	Personnel Placements	Swindon Desinger Outler
Bath ASU	Deceuninck	KP Garages and Body Shop	QinetiQ	Thrings
BD Medical	DSTL	Launch First	Red Seven Marketing	University West of England
Blueflame Digital Ltd	EM-HR Limited	Marriott Hotel	Rendermedia	Vennpoint Ltd
C&D Recruitment	Frankly Recruitment	MG Cannon	Riven Associates	Vets4Pets

Cornerstone Employers

- Experienced in engaging with education
- Dedicated to investing time and resources
- Committed to working with other Cornerstone Employers – meet 3-4 times per year
- Willing to galvanise their business networks
- Focused on sustainability and acts as an ambassador



Challenges

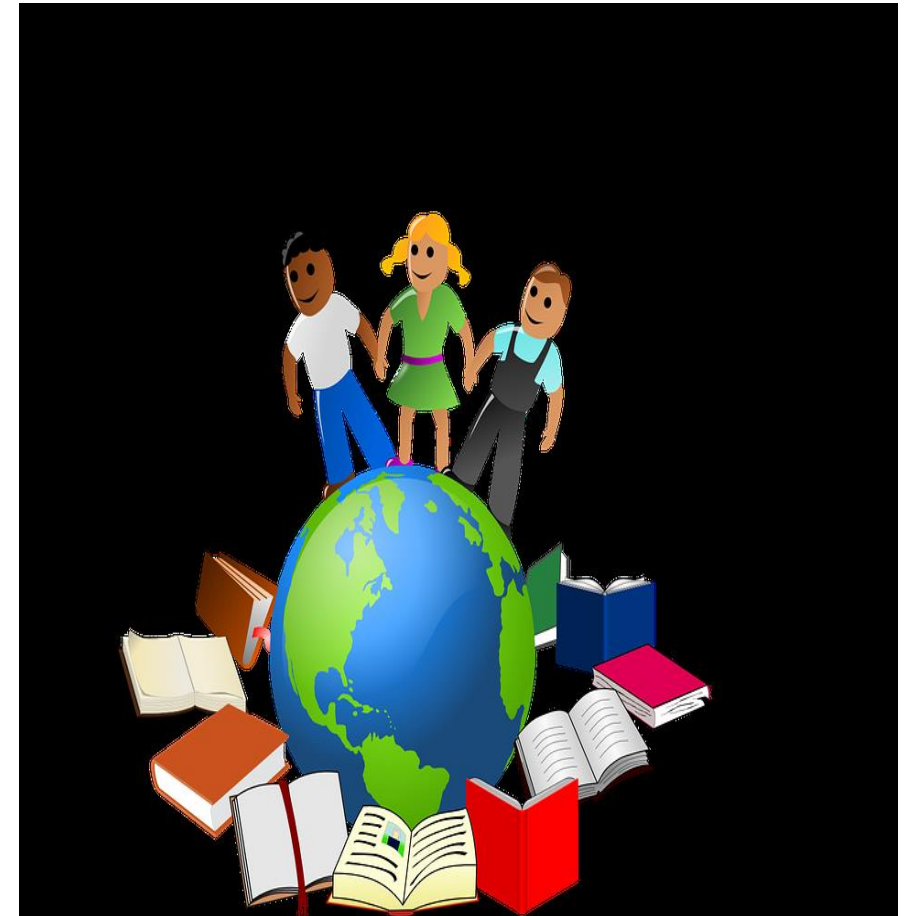


- Careers activities within the Curriculum
- Encounters with employers and employees
- Experiences of the workplace.



Covid19 Impact: Education

- Moving to virtual platforms to engage and education students.
- Careers activities are being delivered online.
- Employees can give virtual encounters to students.
- Workplaces can be visited virtually.



3 asks of business:



**Become an
Enterprise
Adviser**

Time required:
c.4- 8 hours per
month



**Become a
Cornerstone
Employer**

Time required:
ongoing



**Engage directly
with young
people:
“Give an hour”**

Time required:
ad hoc

Thank you

Shona Taylor

Swindon and Wiltshire Careers Hub Lead

shona.taylor@wiltshire.gov.uk

Tel: 07467440995

Katie Cross

Senior Enterprise Coordinator

katie.cross@wiltshire.gov.uk

Tel: 07876257510

Enterprise Coordinators:

Auriel Chandarana (Swindon)

AChandarana@swindon.gov.uk

Tel: 07989 387868

Steven Haines (South Wiltshire)

steven.haines@wiltshire.gov.uk

Tel: 07774 176 751

Nicola Randy (North Wiltshire)

nicola.randy@wiltshire.gov.uk

Tel: 07774 331914

