

**A303**  
**Amesbury to**  
**Berwick Down**



# Highways England's journey



We're transforming our road network to meet the challenges and opportunities of the future

Past five years have seen £15bn investment in the biggest upgrade to our network in a generation – set to increase significantly

In the South West:

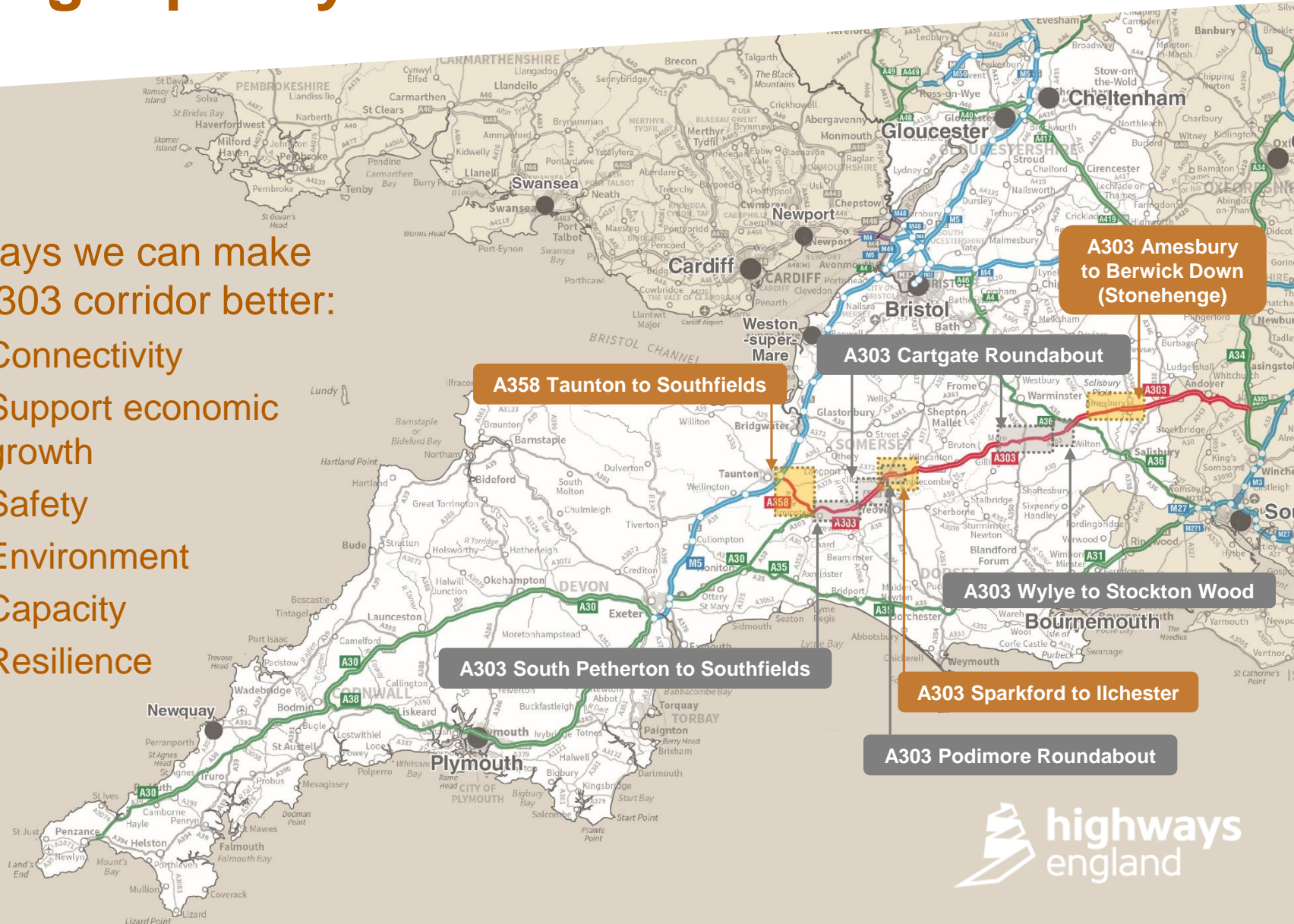
- A303/A358 Corridor
- A30
- A417
- M49
- M4



# A high quality route to the South West

Six ways we can make the A303 corridor better:

- Connectivity
- Support economic growth
- Safety
- Environment
- Capacity
- Resilience



# Why we need to upgrade the A303



Was designed for 13,000 vehicles a day but can reach 30,000 plus



Delays can be an hour or longer at peak times



Traffic volumes in nearby villages can leap by 50% when the A303 is congested



Productivity across the south west is 24% below the national average



# Regional growth



Tourism spending  
in the south west  
is £4.5bn



85% of UK visits  
to the south west  
come by car



Faster journeys  
will help boost the  
local and regional  
economy





# A303 Stonehenge





# Our Objectives

**Transport:** Create a high quality reliable route between the South East and the South West that meets the future needs of traffic



**Economy:** Enable growth in jobs and housing by providing a free-flowing and reliable connection between the South East and the South West



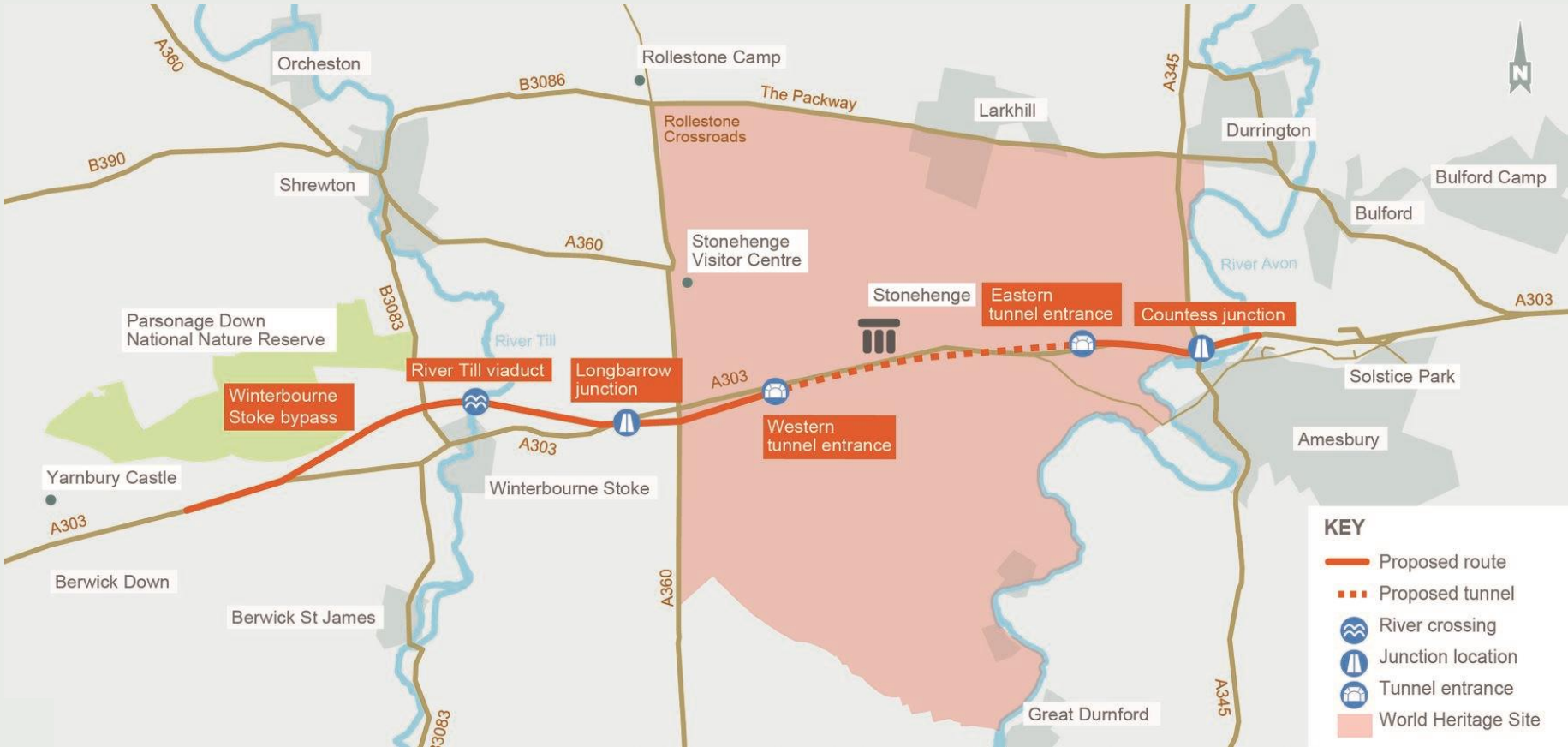
**Heritage:** Help conserve and enhance the World Heritage Site and to make it easier to reach and explore



**Community and environment:** Improve biodiversity and provide a positive legacy for nearby communities



# A303 Stonehenge at a glance



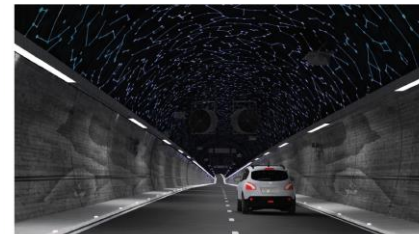
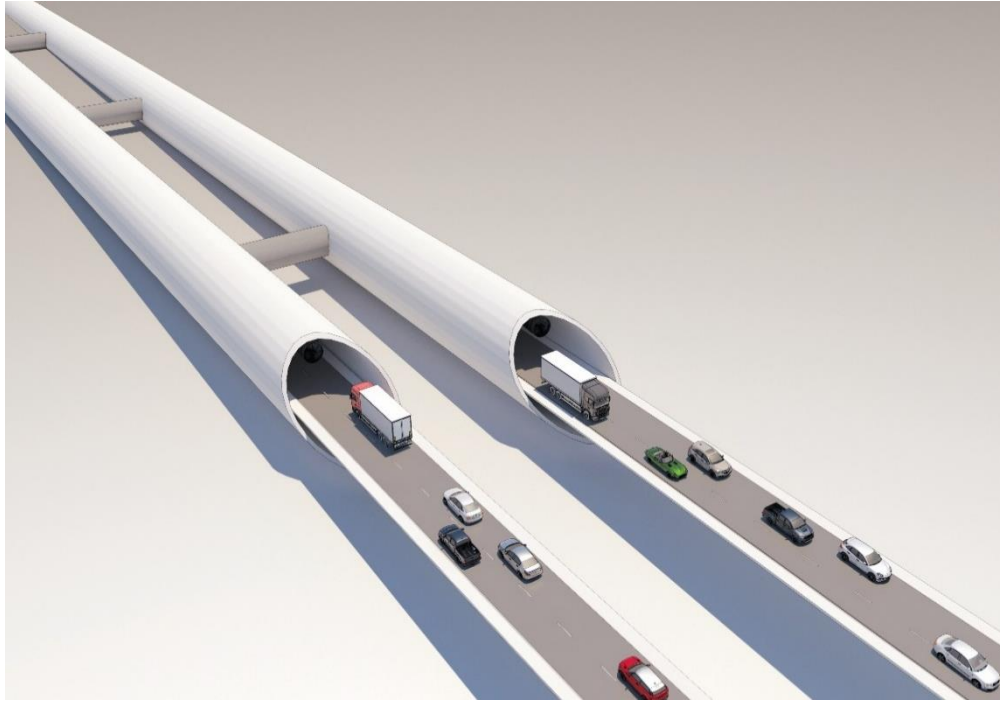


# Countess Roundabout



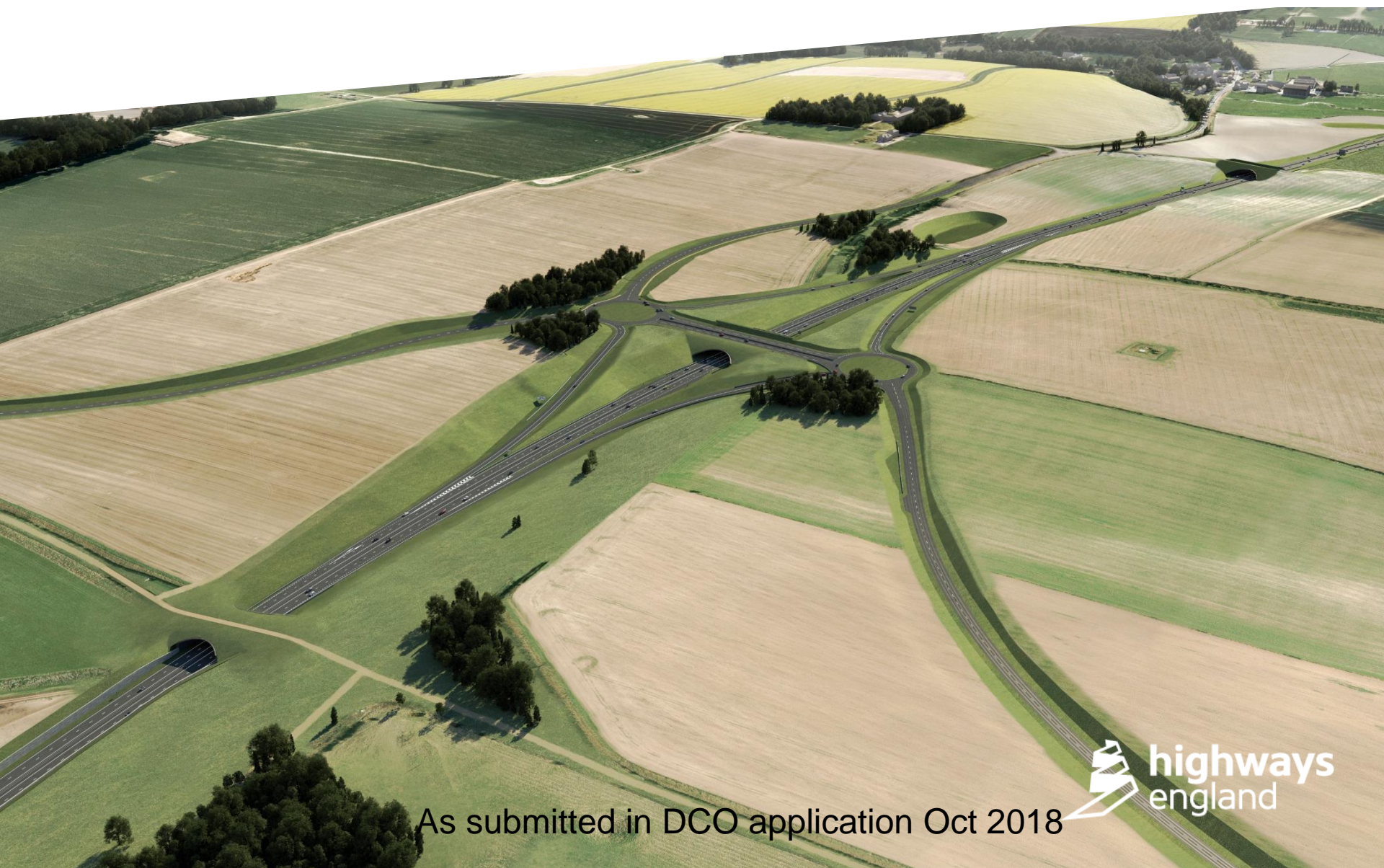


# The Tunnel





# Longbarrow junction



As submitted in DCO application Oct 2018



# Winterbourne Stoke Bypass

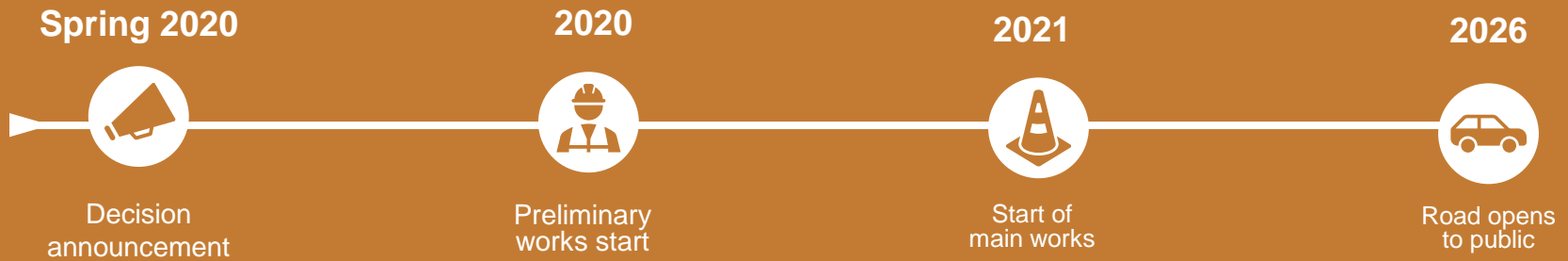




# The story so far



# Next steps





# Ensuring businesses are ready

- Helping businesses in the local area grow, and leave a legacy
- Will be opportunities for local businesses, including being part of the main contractor's supply chain
- Possible apprenticeships



# Business Survey

- Learn about your concerns – so we can look ahead to construction
- How you might want to engage with us in the future
- [Click here to link to survey](#)





Thank you  
Any questions?