



**Western** Porth y  
Gateway Gorllewin

# The Western Gateway Partnership

Your powerhouse, working together for  
a greener, fairer growth



Western Gateway Porth y Gorllewin

# Who we are

The pan-regional partnership for South Wales and Western England.

- Spans **two countries**
- Includes up to **8 cities, 3 city regions**
- Home to **4.4 million** people
- Led by a board that is made up of business, academic and local authority leaders







Western Gateway Porth y Gorllewin



# Our mission

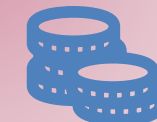
Bring together business, research and governments to work together to create a greener, fairer future for all



Add £34 bn to the economy



Attract investment and grow exports by £4 bn



Decarbonise our economy



Connect communities



Unlock innovation





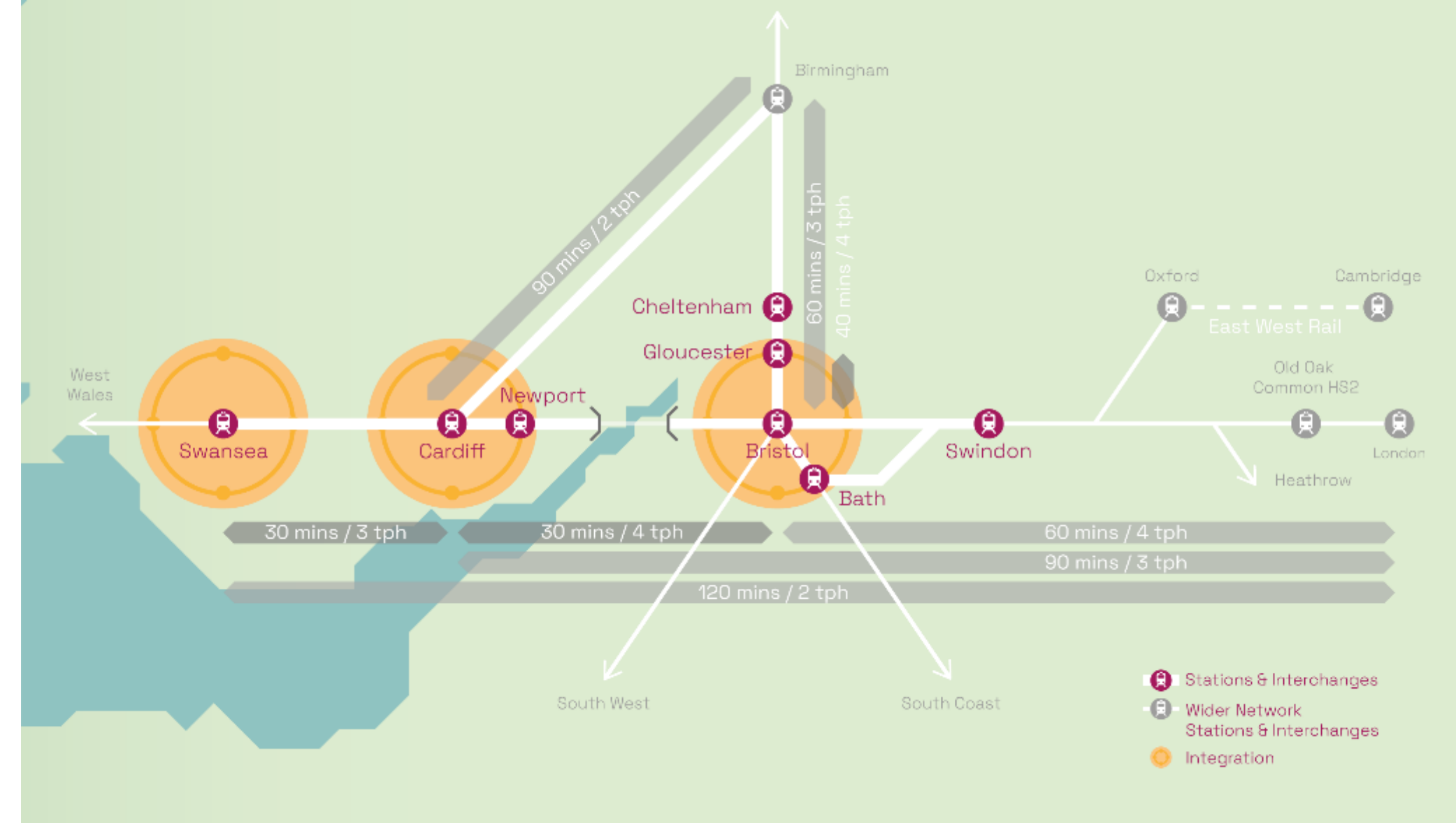
Western Gateway Porth y Gorllewin

# Strategic Rail Vision

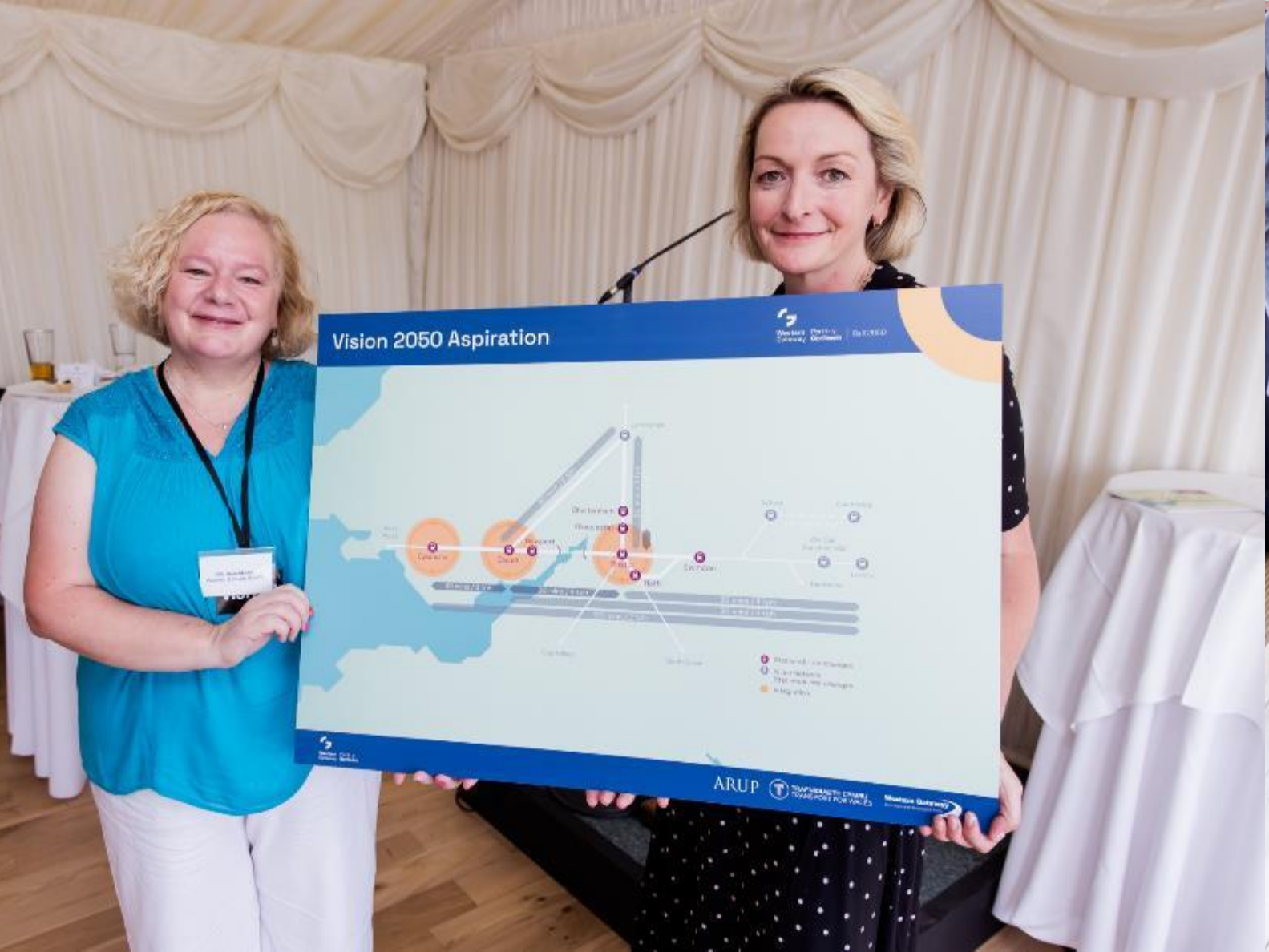
The Western Gateway Rail Vision 2050 launched locally in March 2023 and in Parliament at the beginning of September 2023.

Phase 2 of the Rail Vision is underway to understand the priority schemes to shape a Rail Deal which recognises the capacity for TFW and WECA to deliver devolved rail investment. Priority schemes include some 428km electrification which keen to promote as a rolling programme.

We are holding a series of rail innovation events. First was held in Swindon in October focused on future stations. [Businesses and decision makers gather in Swindon to bring the world's future railways to South Wales and Western England | Western Gateway \(western-gateway.co.uk\)](#)















Western Gateway Porth y Gorllewin

# Severn Edge

The Severn Edge working group continue to have discussions and host site visits with high profile nuclear technology and other low carbon energy providers.

A Severn Edge Vision document is nearing completion. It will outline our ambition for the sites to be at the forefront of a green energy revolution that delivers affordable, low carbon energy, levels up communities, and boosts the local and wider economy.





Western Gateway Porth y Gorllewin

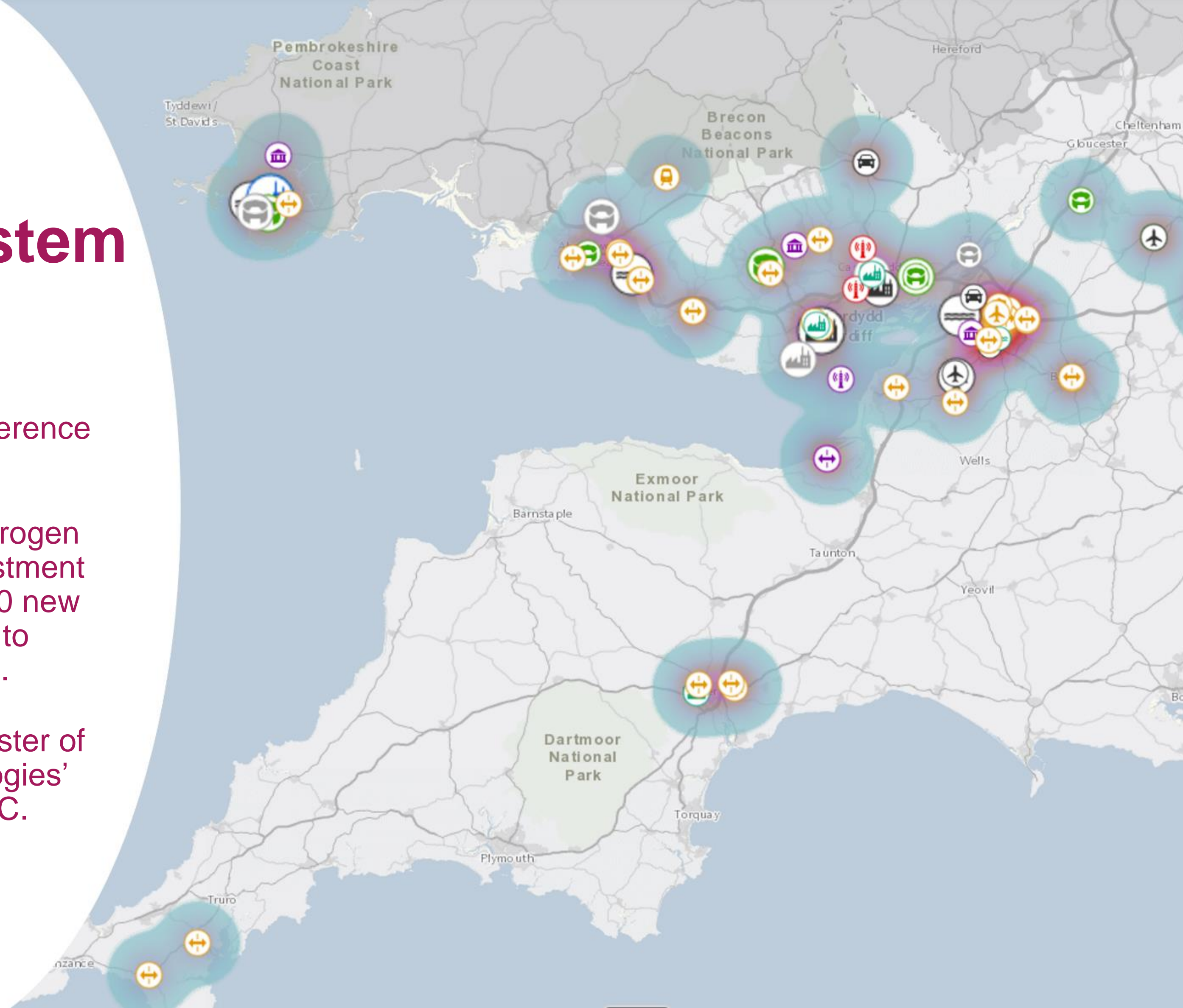
# Hydrogen Ecosystem

Hydrogen Ecosystem Map.

Hydrogen Gateway – a national conference attended by over 500 individuals.

Launched the Western Gateway Hydrogen Delivery Pathway that suggests investment in hydrogen could create up to 40,000 new jobs, safeguard 60,000, and save up to 21,000 kilo tonnes of carbon by 2050.

‘GW-SHIFT: Great Western Supercluster of Hydrogen Impact for Future Technologies’ has received £2.5 million from EPSRC.





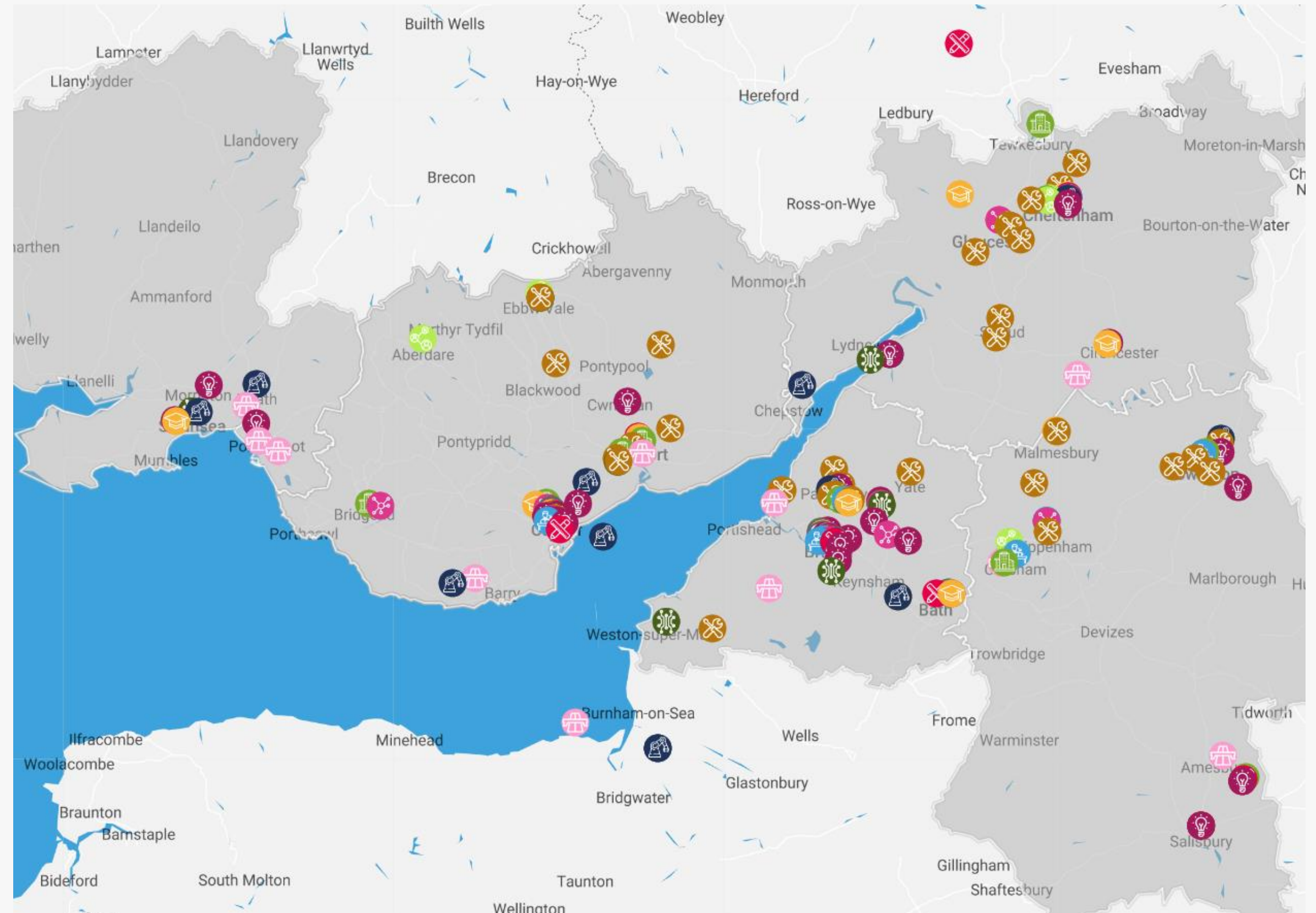


Western Gateway Porth y Gorllewin

# Innovation and Investment

Cyber and Technology 'Super Cluster' mapping project is underway which aims to present the area's technology sectors.

- Excels 25% above national average in cybersecurity
- 1/3 of all UK Cyber patents
- >6x higher density of cyber firms
- Need more engagement between clusters
- Support startup and SME visibility
- The big projects
- Connect to investors and grow international links







Western Gateway Porth y Gorllewin

# Innovation and Investment

Parliamentary reception on 12<sup>th</sup> December announced work on setting up a pan-regional fund. [New fund and research announced in Westminster to unlock £56bn investment in South Wales and Western England | Western Gateway \(western-gateway.co.uk\)](#)

Investment Potential in the Western Gateway [Investment briefing FINAL \(western-gateway.co.uk\)](#)







Western Gateway Porth y Gorllewin

# The Severn Estuary

It is estimated the UK has around **50% of Europe's tidal energy resource**.

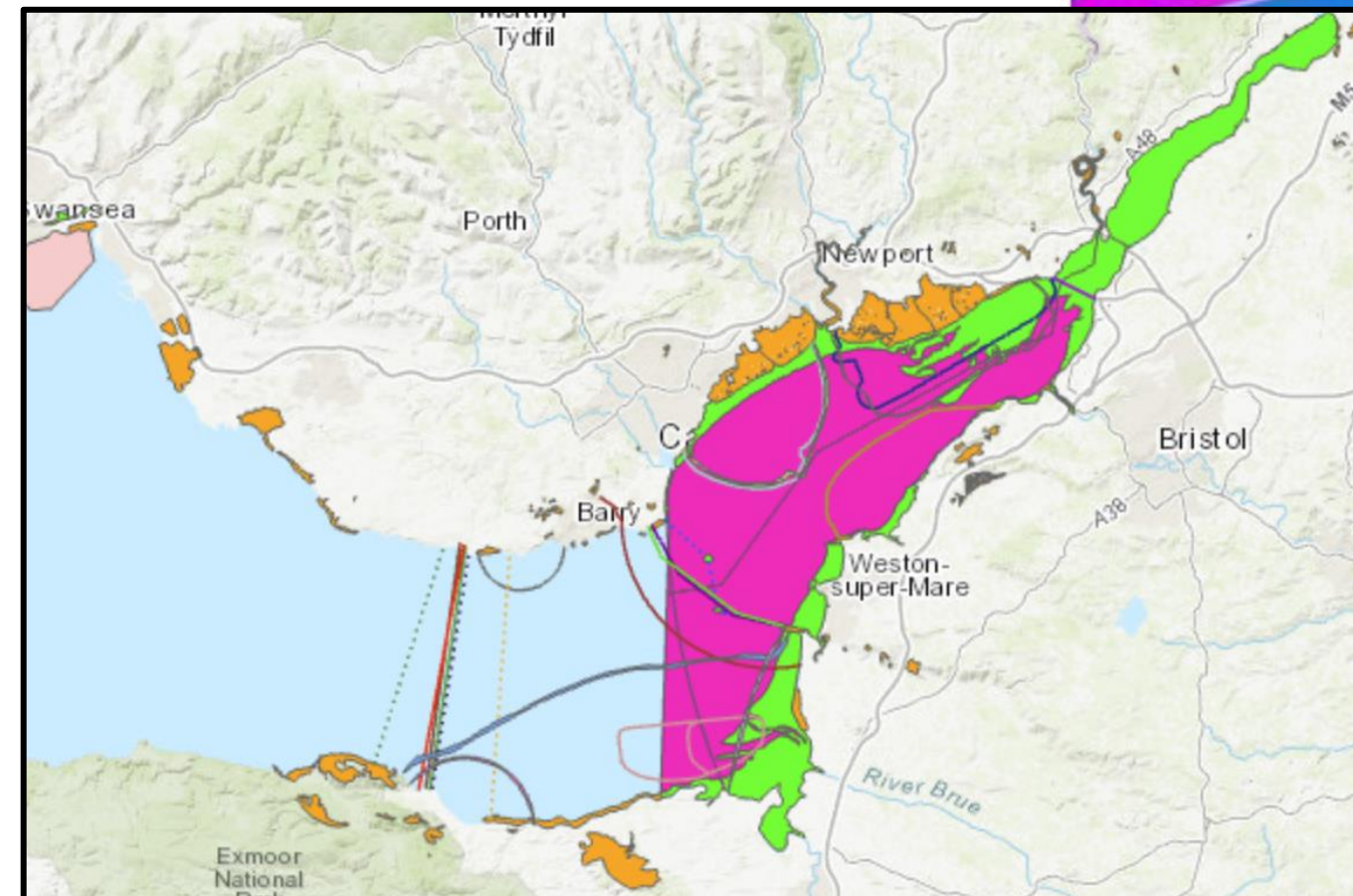
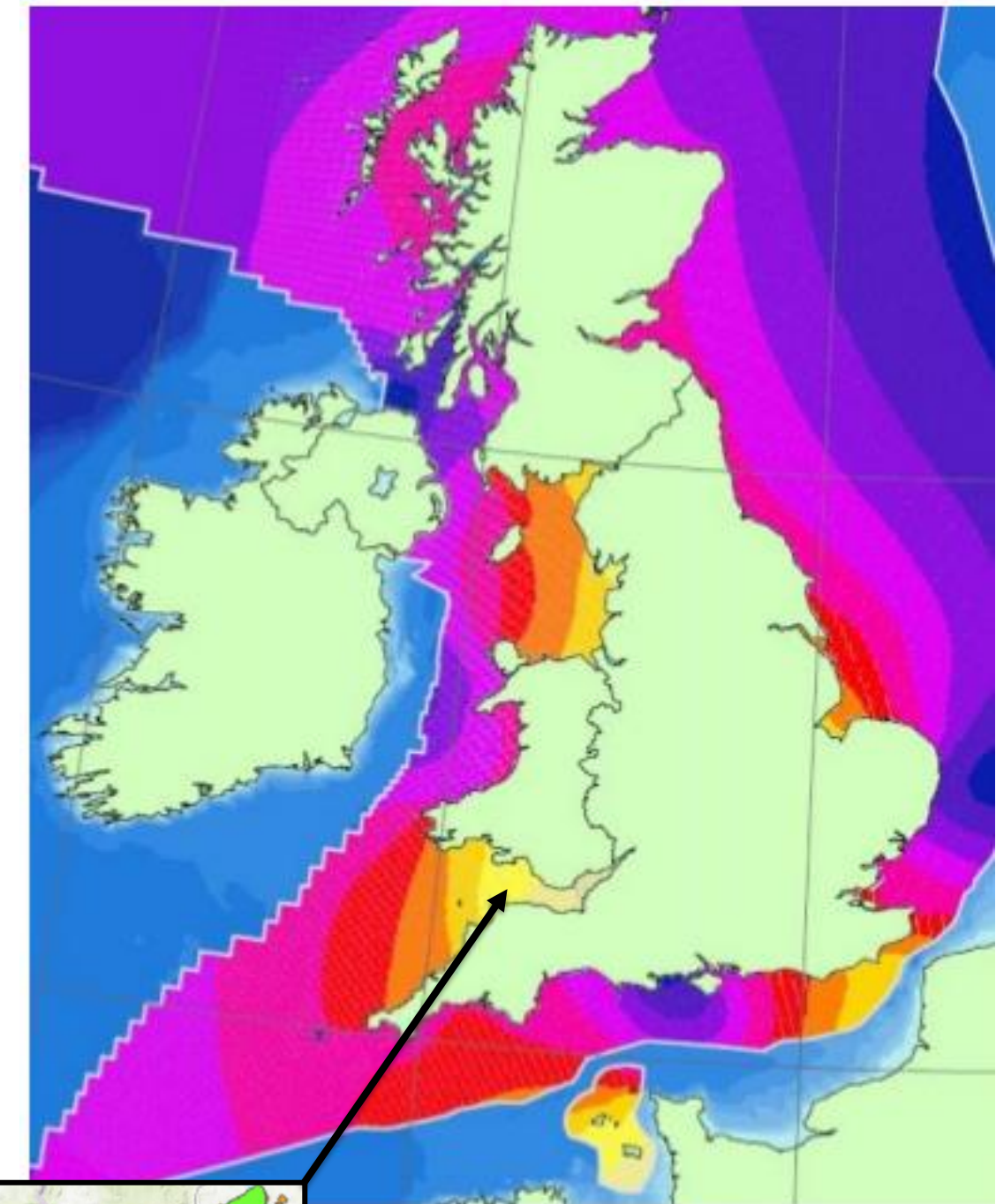
The Severn Estuary is the UK's most favourable location for tidal range energy, with **one of the highest tidal ranges in the world** at 15 metres.

Previous estimates suggest the Severn Estuary can provide **up to 10% of the UK's electricity needs**.

An area of international importance for wildlife habitats.

Plays a large role in the area's shipping, fishing, and recreational sectors.

There have been at least 25 tidal energy proposals in the Severn Estuary over the last 20 years.







Western Gateway Porth y Gorllewin

# Independent Commission

The Independent Commission will be made up of a range of experts working together to impartially understand the available options and what the requirements would be for our area to accept a proposal or not.

- Any approach will be underpinned by sustainable development.
- We need to learn the lessons of the past.
- It will be a fair, transparent, and collaborative process.
- This is a platform to share your expertise and knowledge to help us understand the key priorities and challenges in the Severn Estuary.



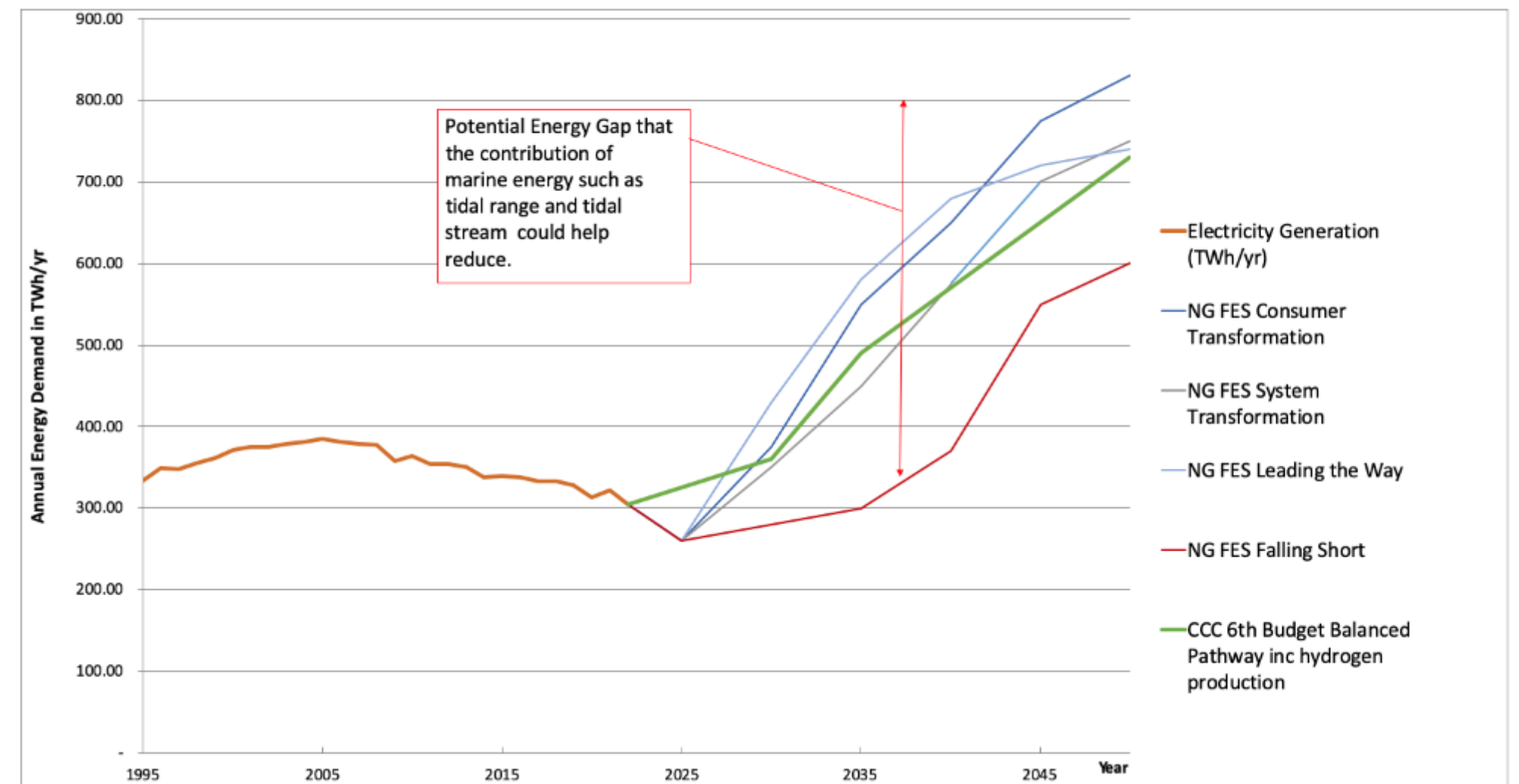




# Areas of Focus

- Grid stability and other energy system benefits;
- Marginal cost of tidal power over its lifetime and potential benefits to future generations;
- Innovative forms of funding and financing, such as Regulated Asset Base (RAB) financing;
- Protecting and enhancing the environment from project outset;
- Socio-economic effects from the development of tidal power, including supply chain, attitudes, and needs;
- Reviewing “stranded asset” and “end-of-life” decommissioning options;
- Climate change impacts and potential for flood mitigation.

1995 to 2050 Projections (National Grid Future Energy Scenarios and Climate Change Committee Sixth Budget)







Western Gateway Porth y Gorllewin



[www.western-gateway.co.uk](http://www.western-gateway.co.uk)



[secretariat@western-gateway.co.uk](mailto:secretariat@western-gateway.co.uk)

## Contact us



@WesternGateway\_



Western Gateway





**Western  
Gateway** Porth y  
**Gorllewin**



**Bath & North East  
Somerset Council**  
Improving People's Lives



**Gloucestershire**  
COUNTY COUNCIL

**gfirst LEP**  
growing gloucestershire



**Wiltshire Council**