



Swindon & Wiltshire  
LOCAL ENTERPRISE PARTNERSHIP

# SWLEP Governance: LIS Subgroups

March 2021



## SWLEP Local Industrial Strategy

- Emerging Local Industrial Strategy, March 2020
- Vision to 2036: To ensure all of our communities benefit from inclusive and sustainable growth, making the Swindon and Wiltshire area world-renowned for its convergence of innovation, entrepreneurialism and great quality of life



## The UK Industrial Strategy



## Swindon and Wiltshire LIS

**Ideas:** grow R&D and innovation activity, building on our strengths (advanced engineering, energy / sustainability, agritech, life science)s and emerging opportunities (cyber resilience and digital technologies)

**People:** address the skills supply / demand imbalance and ensure there is inclusive growth across socio-economic groups

**Infrastructure:** further improve digital, road and rail connectivity and tackle capacity constraints in energy, water and waste

**Business Environment:** attract investment and enable businesses to reach their potential, build on the Growth Hub successes

**Places:** resilient, agile and inclusive settlements through a more diversified economy, improved cultural and retail offer while conserving and enhancing our natural capital



### Ideas:

- Lifesciences at Porton – Collaborative Innovation Centre to open April 2022
- High-value manufacturing and advanced engineering innovation and R&D
- Multidisciplinary Centre for the circular Economy – Innovation Centre for the Circular Economy. Phase 2 Swindon, Phase 2 NCC site at Wroughton
- Research and innovation opportunities at the Science Museum, Wroughton

### People



- Federation of Higher Education Providers – Institute of Technology opens September 2021

## LIS Strategic Priorities



### Infrastructure

- New Energy Vehicles Fuelling Infrastructure



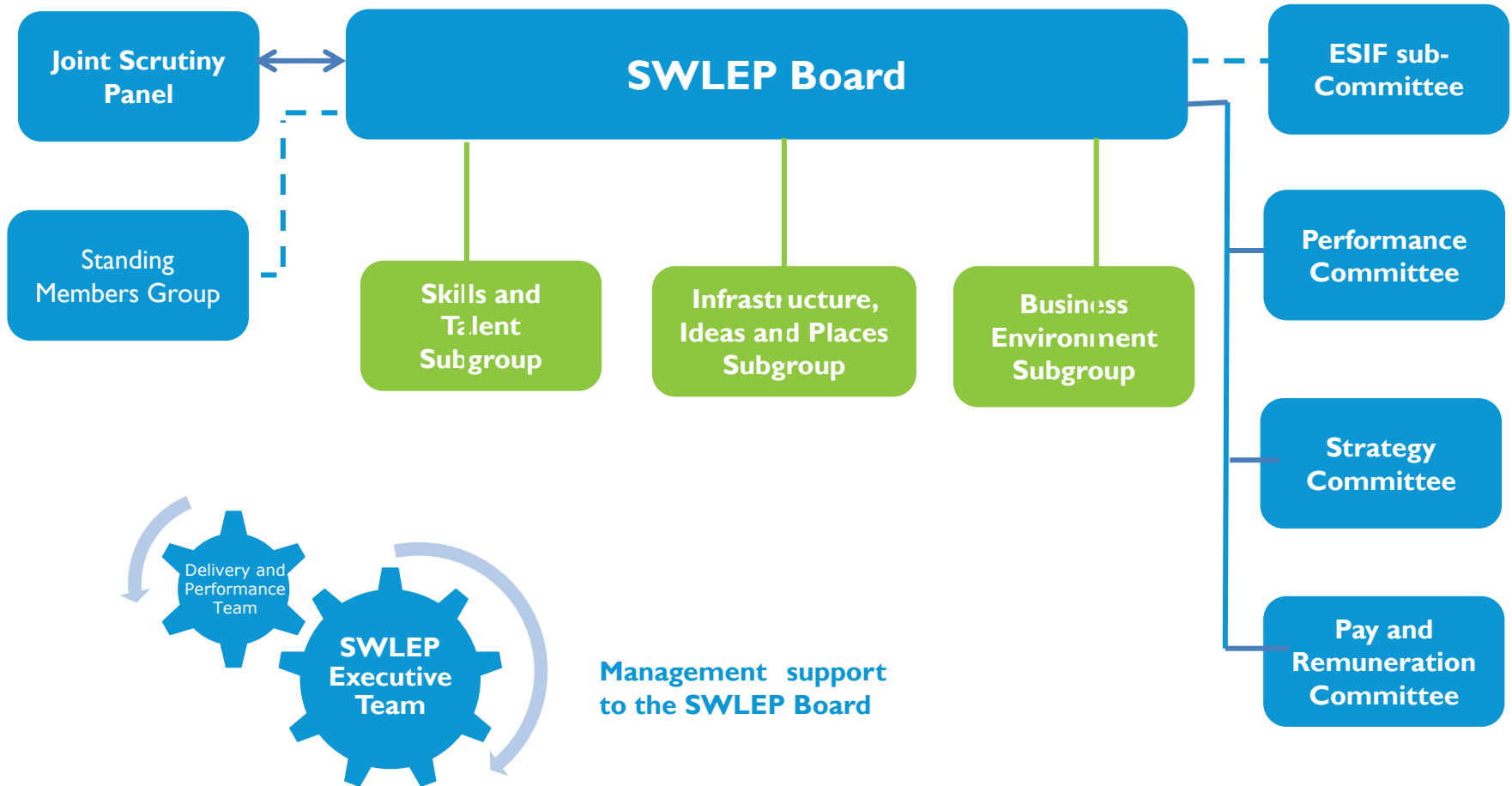
### Business Environment

- Swindon and Wiltshire Business Cyber Centre

### Places



- Good Growth for Swindon
- Good growth for Salisbury
- Rural communities: levelling up opportunities
- Natural Capital
- Clean Growth Tourism and the Great West Way



## Membership SWLEP

- Active participation in SWLEP's Annual General Meeting
- Annual Growth Summit
- Potentially the independent scrutiny of the SWLEP's activities
- Local business reference point and advocate



Swindon & Wiltshire  
LOCAL ENTERPRISE PARTNERSHIP

# Questions

