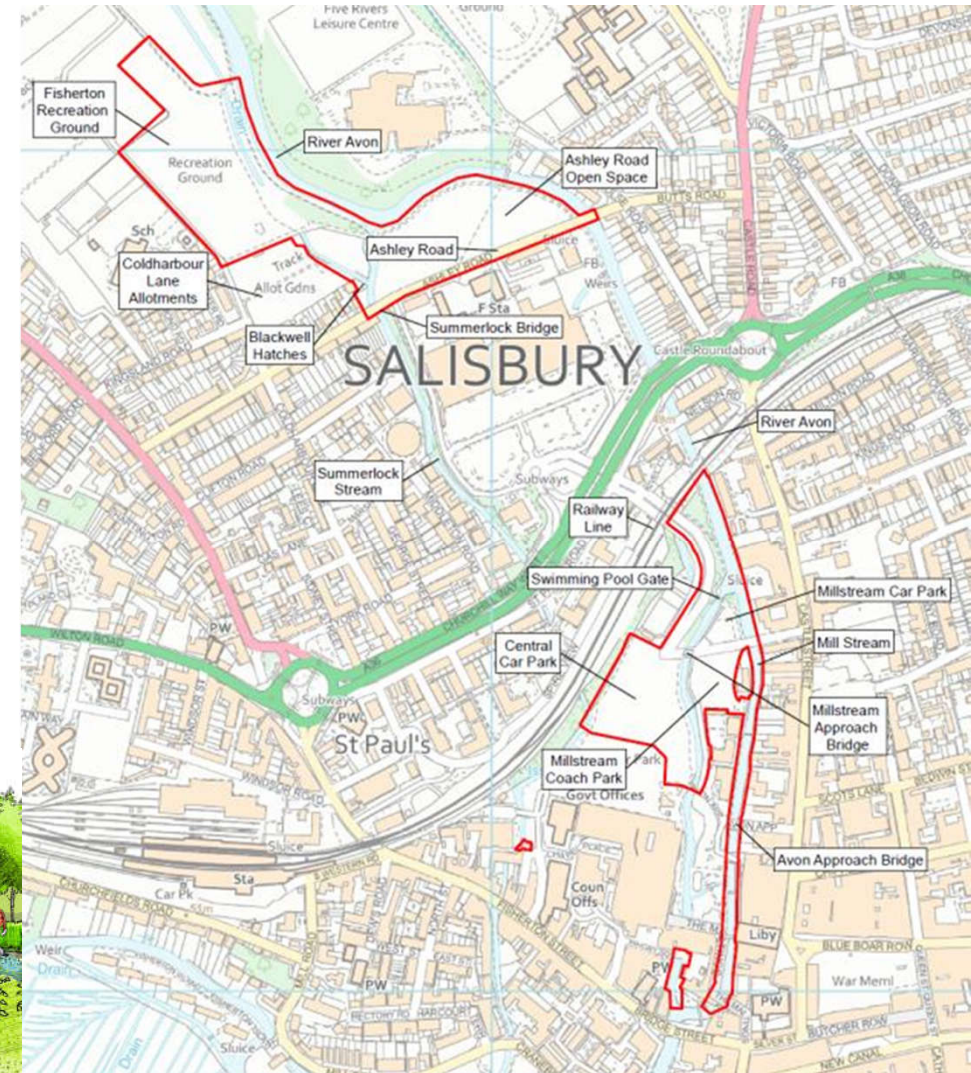


# Salisbury River Park – Phase 1

- The River Park consists of 6 phases - phase 1 is now under construction.
- Construction work started in July 2022 and is planned to finish early 2024.
- The scheme is estimated to cost £27m.
- It is funded from Flood Defence Grant in Aid, Local Levy, Local Growth Fund, Department of Education and National Highways.





# Salisbury River Park



Climate change resilience improved

Enhanced tourist gateway and increased visitor numbers

Flood risk reduced to 250 homes and 100 businesses

650m of new and improved cycling routes and 1,600m of new and improved footpaths

New planting, including 600 new trees

Delivery of 13ha of high quality public open space to be enjoyed by all

Increased opportunities for volunteer groups to become more involved in their local environment

2ha of new high quality riverside habitat, new wetland areas and rewilding

Improved biodiversity of the internationally designated River Avon watercourses, including removal of barriers to fish passage

# Highlights



Water voles relocated



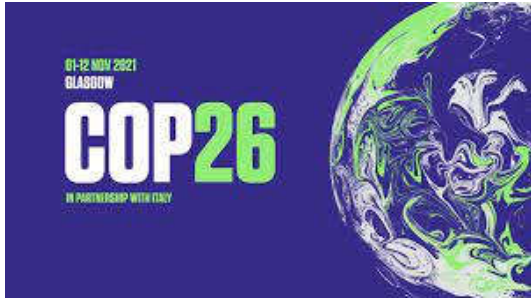
Many site visits including apprentices



Temporary play area at Ashley Rd



Rare orchids relocated





# Challenges



Severe weather



Sewage pollution



A resident driving into the river!



# Site photos



River Avon

Central car park

Millstream

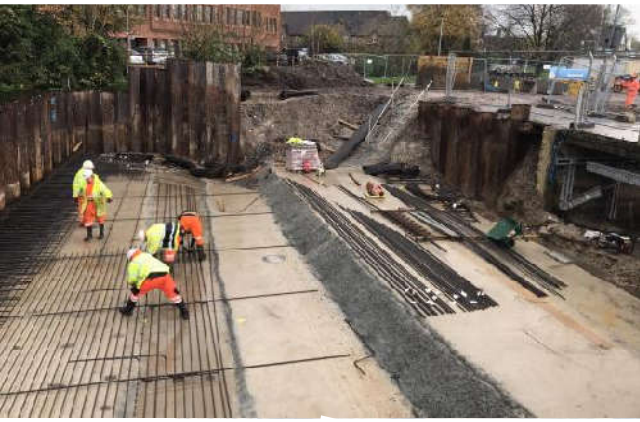
Railway line

A36

Fisherton Rec

Ashley Road Common





Central car park



