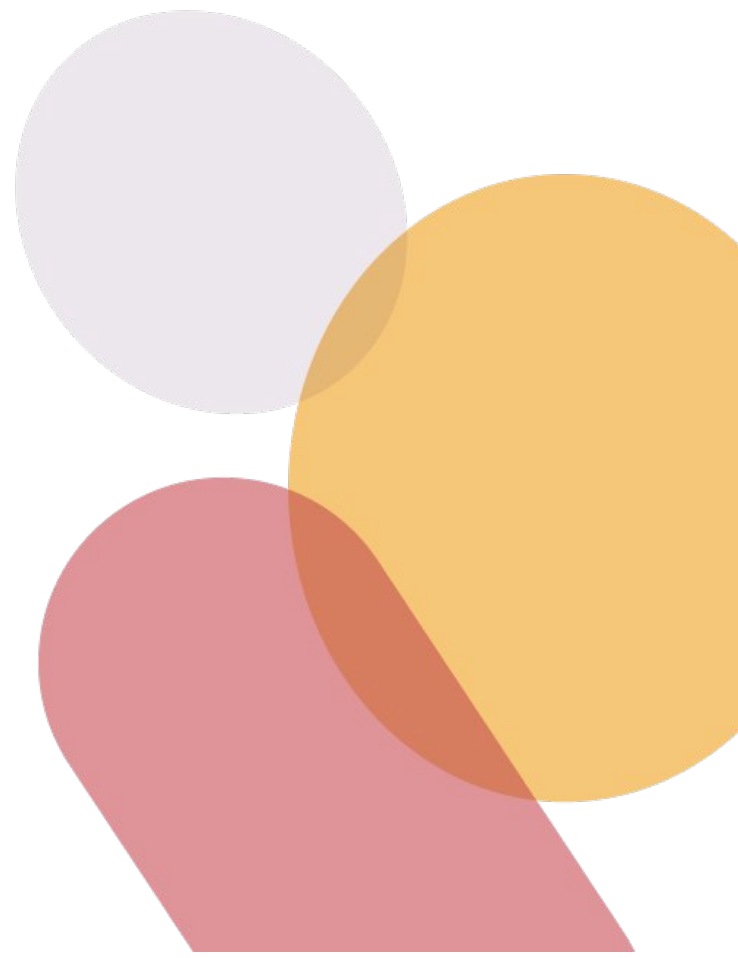


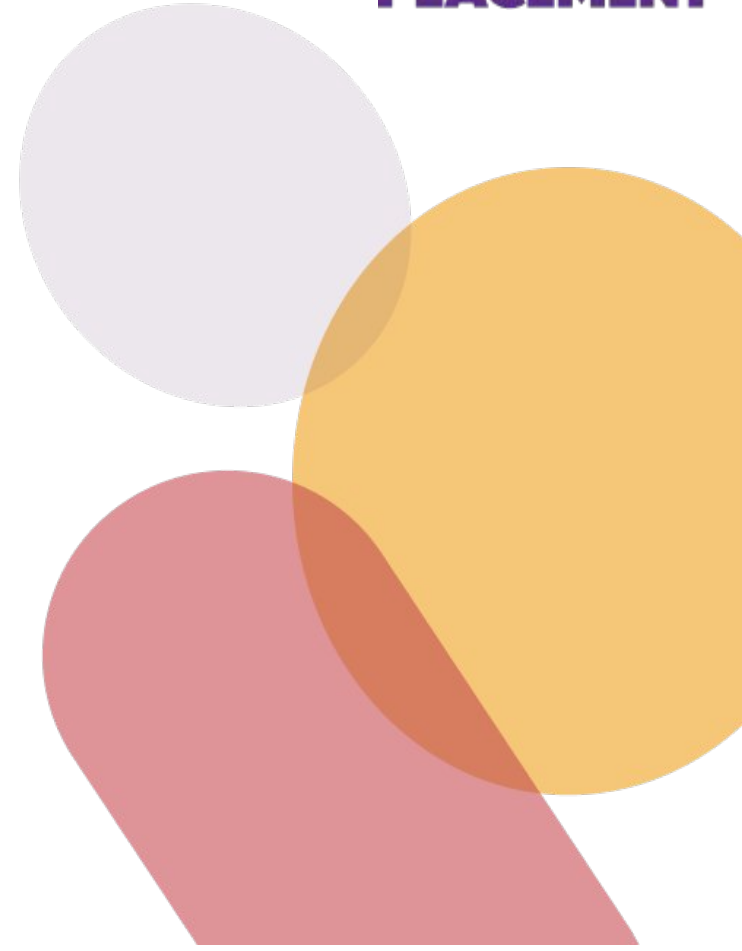
YOUR PLACEMENT

Project update July 2023



Overview

- Project Update
- Trial Update
- Trial Challenges
- Ridgeway Support
- Remaining Funding
- Current Costs
- Long term Funding options



Project Update

| Task | Status |
|------------------------------------|---------------|
| Phase 2 Development Works | Completed |
| Production environment made ready | Completed |
| Recruitment of Ridgeway Apprentice | Completed |
| Trial Period 1st June - 7th July | Completed |
| Phase 3/Next steps planning | In progress |

Trial Update

| Task | Status | Comments |
|--|---------------|--|
| YourPlacement platform ready for Trial | Completed | Including additional features such as dept management for larger businesses |
| Number of employers registered via website | 29 | Good initial interest from employers. Lack of firm commitment when asked to post placement offerings |
| Number of Placements advertised | 6 | Very disappointed with the lack of employer commitment. Only Zurich offered. |
| Zurich committed | | Zurich really like the YP platform and want to roll out across the whole business. Open to supporting recruitment of other employers |

Trial Challenges

| Item | Comments |
|---|---|
| Late start recruiting employers | Delays in Ridgeway resource being recruited and promoting to employers. |
| Lack of Employer Commitment | 29 employers registered, however only one offering placements. |
| Ridgeway resource not focused on defined role | Apprentice recruited to focus on recruiting employers and managing YP Ridgeway trial. |

Ridgeway Support

Role Brief

- £20k of funding allocated for apprenticeship role
 - £10K per year
- Commit to 85% allocated time to YP Project
- Support YP with platform testing
- Support and manage Ridgeway Trial
- Point of contact for employers
- Administration of the YP platform
- Engage with and recruit new employers for trial
- Work in partnership with CEC & YP to advertise and promote the YP platform to employers

Challenges

- Actual time allocated vs Spent is very low
 - <40% of time spent on project
 - More time spent helping in First Aid!
- Numerous missed meetings with YP & CEC
- Often slow/no response
- Unable to attend events (Apprenticefest & Leader conference)
- Late following up on leads.

Remaining Funding

Remaining Budget with Ridgeway: £18.5k

| Option | Description | Notes |
|--|--|--|
| Development, Phase 3, SoW generated and includes: <ul style="list-style-type: none">• Events board• Reporting | Continue developing the platform to add the additional features requested. | Platform delivers core functionality. Phase 3 starts to focus on nice to have features. Is further development required at this stage? |
| Licences for Swindon & Wiltshire Schools | Use the remaining funding to provide a number of licenses per school. Additional licenses would need to be purchased by the school. (9 schools signed up thus far) | Although schools support the idea of the platform, the lack of employer commitment is holding back investment from schools. |
| Focus on Employer recruitment | Between July and Jan 24 focus on employer commitment and re-visit in Jan to decide on smaller scale rollout based on number of committed employers. | Work with CEC, Zurich and YP to promote the platform through possible marketing/events. |

Current Costs

| Item | Cost |
|--|---------------|
| Yearly Hosting of Platform (July 23- July 24) - End of next WE window. | £6,000 |
| Support and Maintenance | £1,200 |
| Total | £7,200 |

Notes:

- Only income in 2023 supports the Video Library renewal for £275
- Currently no other income to the YP platform so remaining costs are currently being covered by YP - these don't include the team's time.
- This can not continue long term
- Without funding the platform likely to close by the end of September 2023

Long term Funding options

Notes:

- YourPlacement is designed to be self-funded once released to schools
- Initial plan was to fund the platform through student licences
 - Some schools have reported concerns regarding the license cost
- Charging employers would further discourage them from using the platform.
- Potential to work with Universities
 - Reduce/remove costs for school version
 - Seen as more long term potential funding option as this will take time to impliment

Phase 3 SoW

- Phase 3 is the final agreed funded development cycle
- est £19k of funding available from original funding provided.
- Confirm requirements ASAP
- Invoicing prior to summer break
- Works to be completed by October 2024
- Proposed Phase 3 focus on 2 areas:
 - Events Board
 - Reporting Suite

SoW Draft for review:

https://docs.google.com/document/d/1KI_kohdkIIM9nac26TKDxH1n0Lo7VVcu/edit?usp=share_link&oid=111170027753218819071&rtpof=true&sd=true

Summer Plans June - September

| Task | Owner | Estimated Completion Date | Comments |
|--|-------------------|----------------------------------|--|
| Development of Phase 3 works | YourPlacement | October 2024 | Once Sow is confirmed and invoice processed work will start |
| Completion of Cloud infrastructure ahead of roll out | YourPlacement | August 2024 | Trial will run on our development environment. Once numbers are confirmed for rollout this will impact how we design build the full production setup |
| Employer Recruitment | CEC/Ridgeway | On Going | This is the key area of concern. Most time resource will need to be spent to engage and encourage employers to take part. |
| School sign up | Yourplacement/CEC | On Going | YP are attending: Swindon and Wilts Leader Conference. Careers hub network meeting on the 6th June. School registration now available on YP website |

Swindon & Wilts rollout

- Target schools for rollout - Swindon & Wilts
 - Estimated number of Schools/Students for roll out?
- School engagement about to start through Careers Hub Network and Careers leaders conference.
- License cost
 - License model is built on a per student basis
 - Discounts can be applied to bulk buy based on number of schools/Students
- School sign up timeline
- Main concern is lack of employers
 - Schools won't see need for platform which contains limited number of employers

Any Questions?

