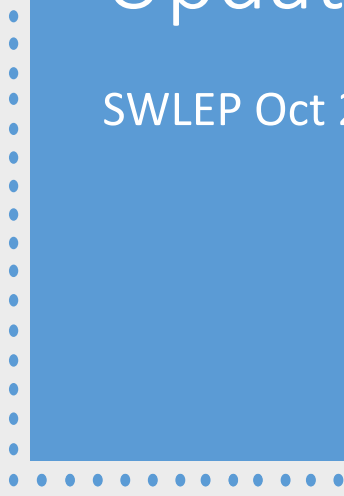
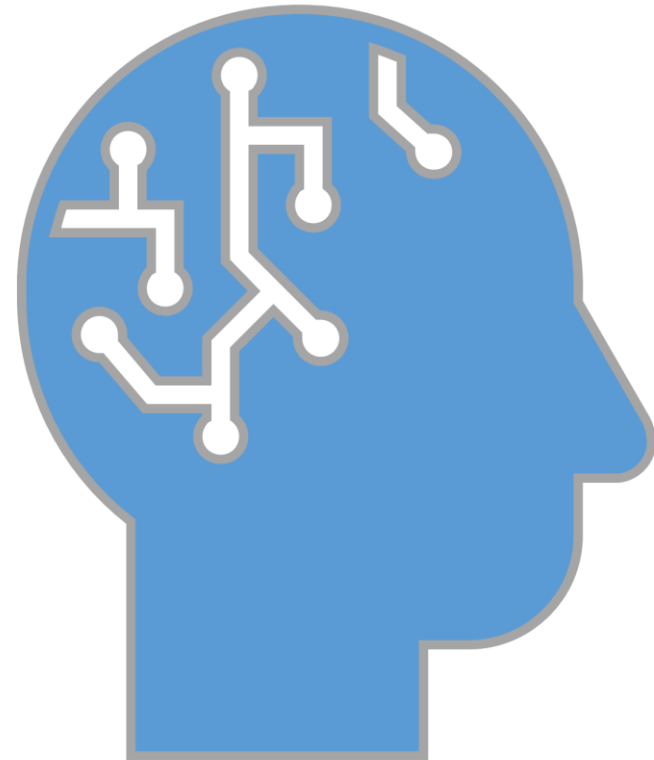




Labour Market Intelligence – EESAG Update

SWLEP Oct 2020



Contents

Why we monitor and which data we use

Key insights

How we use insights



Intelligence reports are an important part of the Swindon and Wiltshire Skills Plan

PRIORITY 1: ADDRESS SKILLS SUPPLY AND DEMAND IMBALANCE



Intelligence

- Improve use of skills and labour market intelligence



Apprenticeships

- Achieve a step change in take-up and achievement of apprenticeships



Higher Education

- Meet the demand for high skill jobs, in particular those requiring STEM skills

PRIORITY 2: ENSURE INCLUSIVE GROWTH



Aspirations & Employability

- Raise aspirations and improve employability of under-represented groups

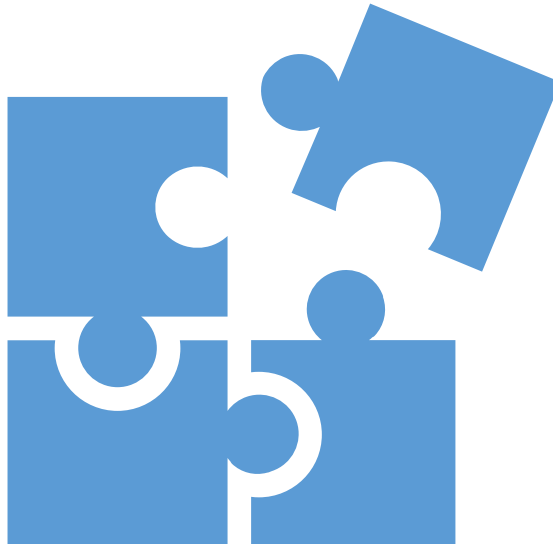


Employee Health

- Promote programmes to improve physical and mental health of employees



We piece together and corroborate information from several datasets



Online Job & Apprenticeship Postings

Unemployment Data

Claimant Counts

Job Retention (CJRS) & Self-Employment Support (SEISS)

HR1 Data



Contents

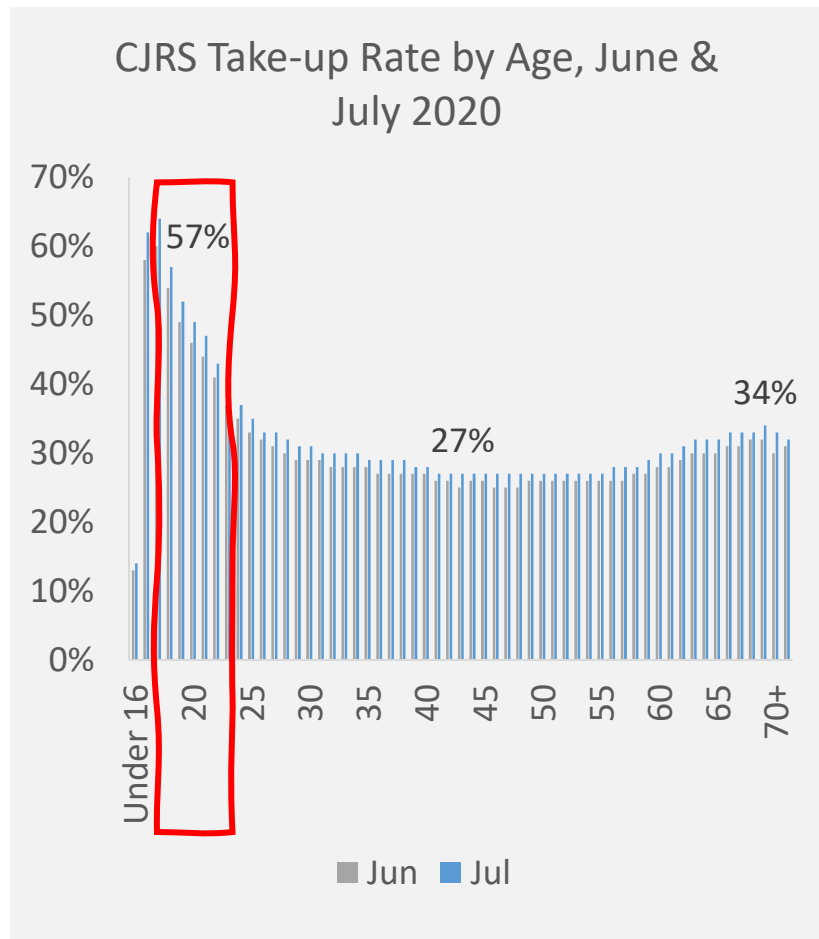
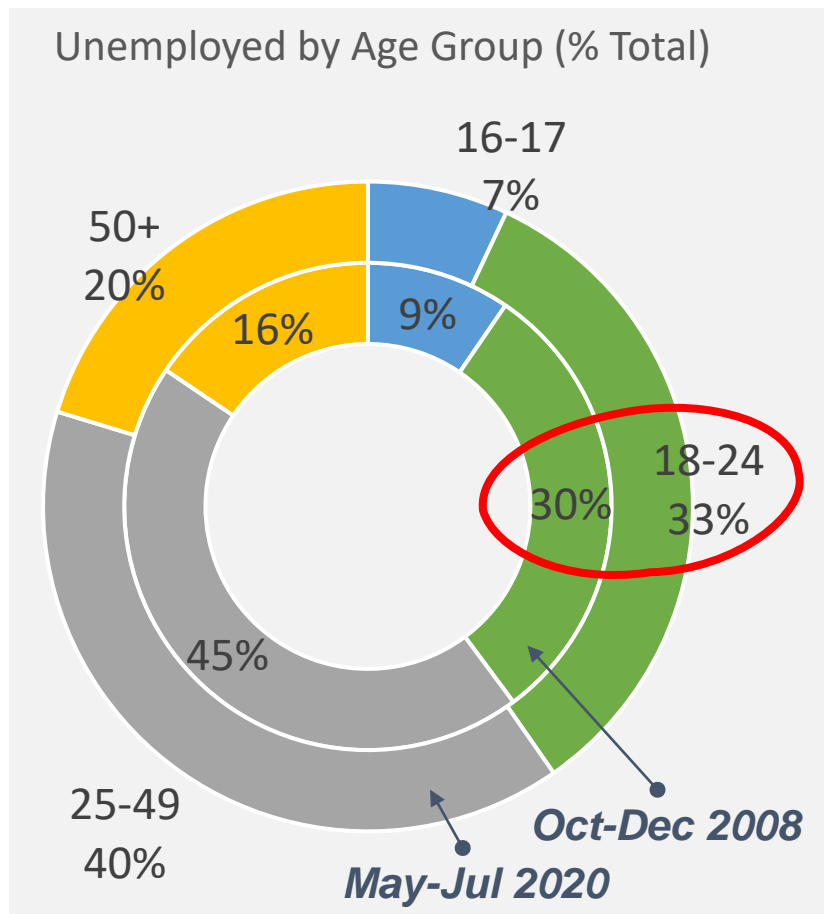
Why we monitor and which data we use

Key insights

How we use data



18-24 year olds have been more affected...

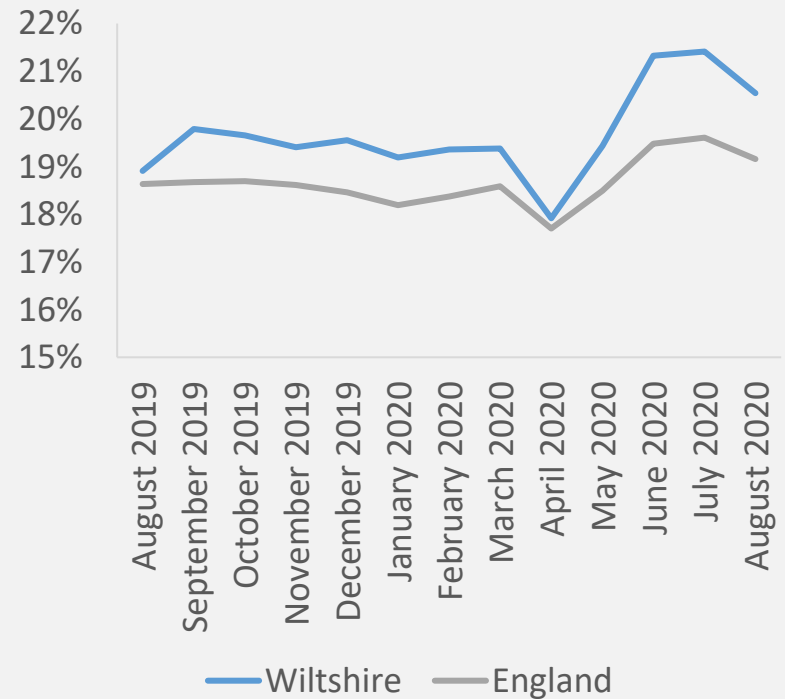


...and it seems to be more pronounced in Wiltshire

All Claimants as a Proportion of Residents Aged 16-64, Wiltshire vs. England



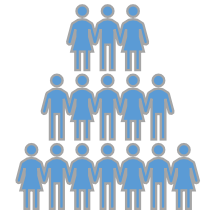
18-24 Claimants (% Total), Wiltshire vs. England



Government has launched a number of support programmes...

All

- Coronavirus Job Retention Scheme (CJRS)
- Self-Employment Income Support Scheme (SEISS)
- "A Good Place to Start" - DWP Campaign
- Construction Talent Retention Scheme
- National Careers Service - Redeployment Service, Virtual Jobs Fairs and Webinars
- ESFA Redundancy Support Service for Apprentices (ReSSA) - helping apprentices to continue their apprenticeship
- ERDF Recovery Grant (SMEs)
- Free Courses and Workshops

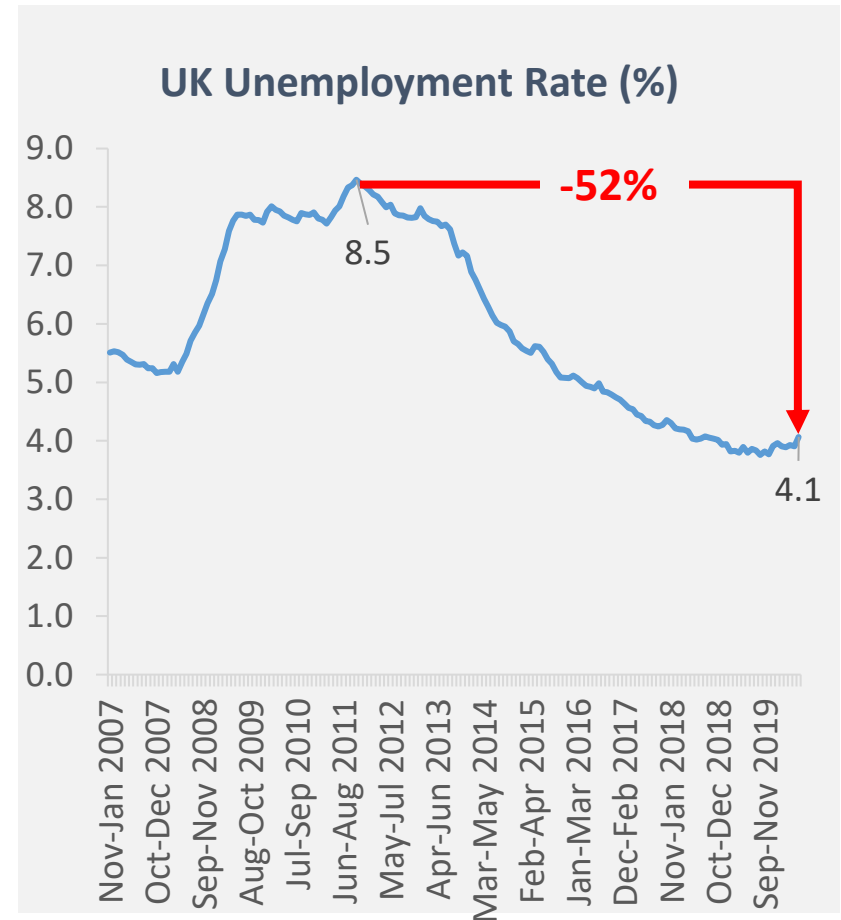
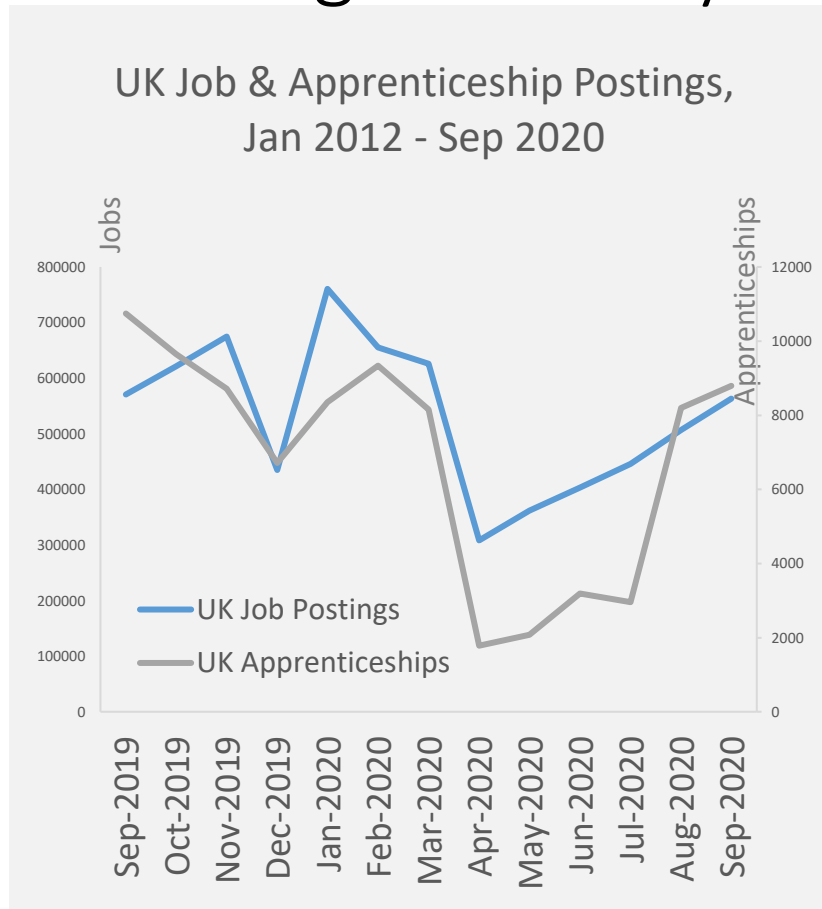


Young

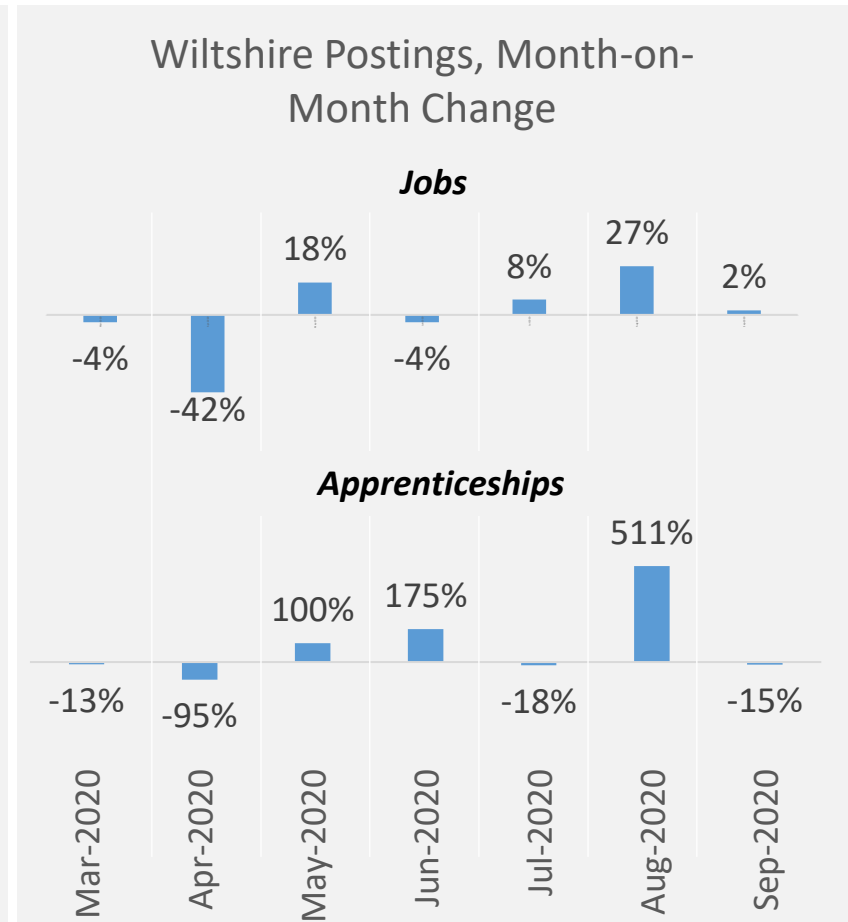
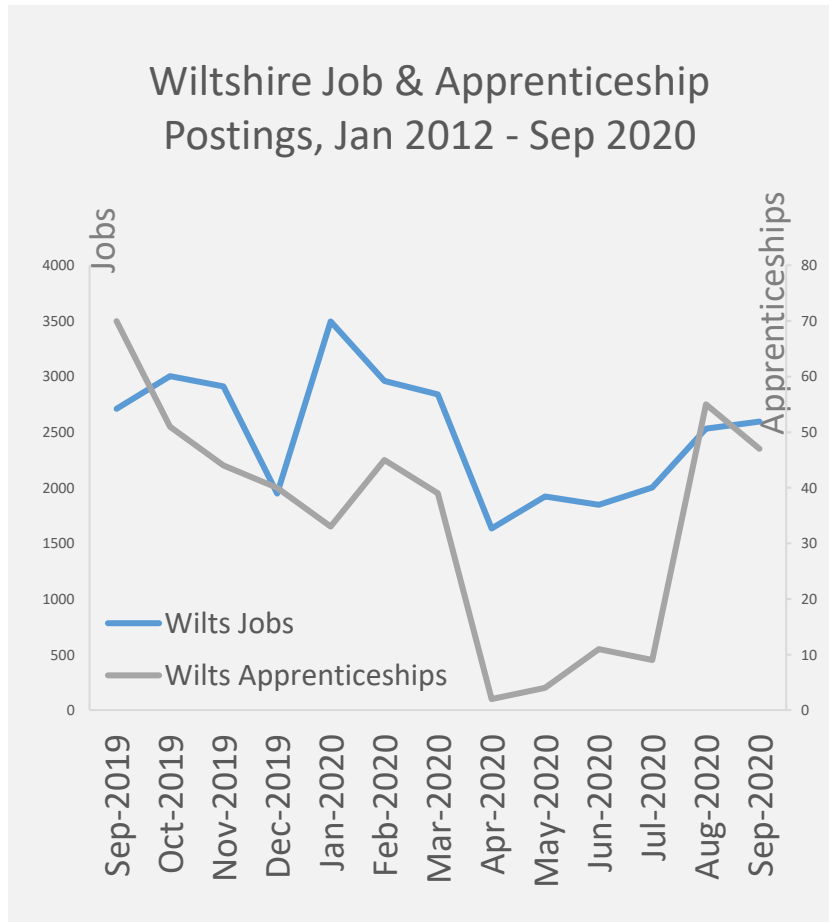
- Kickstart scheme - funding for businesses creating new, additional, 6-month job placements for 16-24-year olds on Universal Credit
- DfE - Additional Traineeships for young people with funding of £1,000 for employers (max 10)
- DfE - Additional year of Classroom courses for 18-19 yr olds
- Fast Futures (Free Digital Training)



...and these interventions appear to be working nationally...

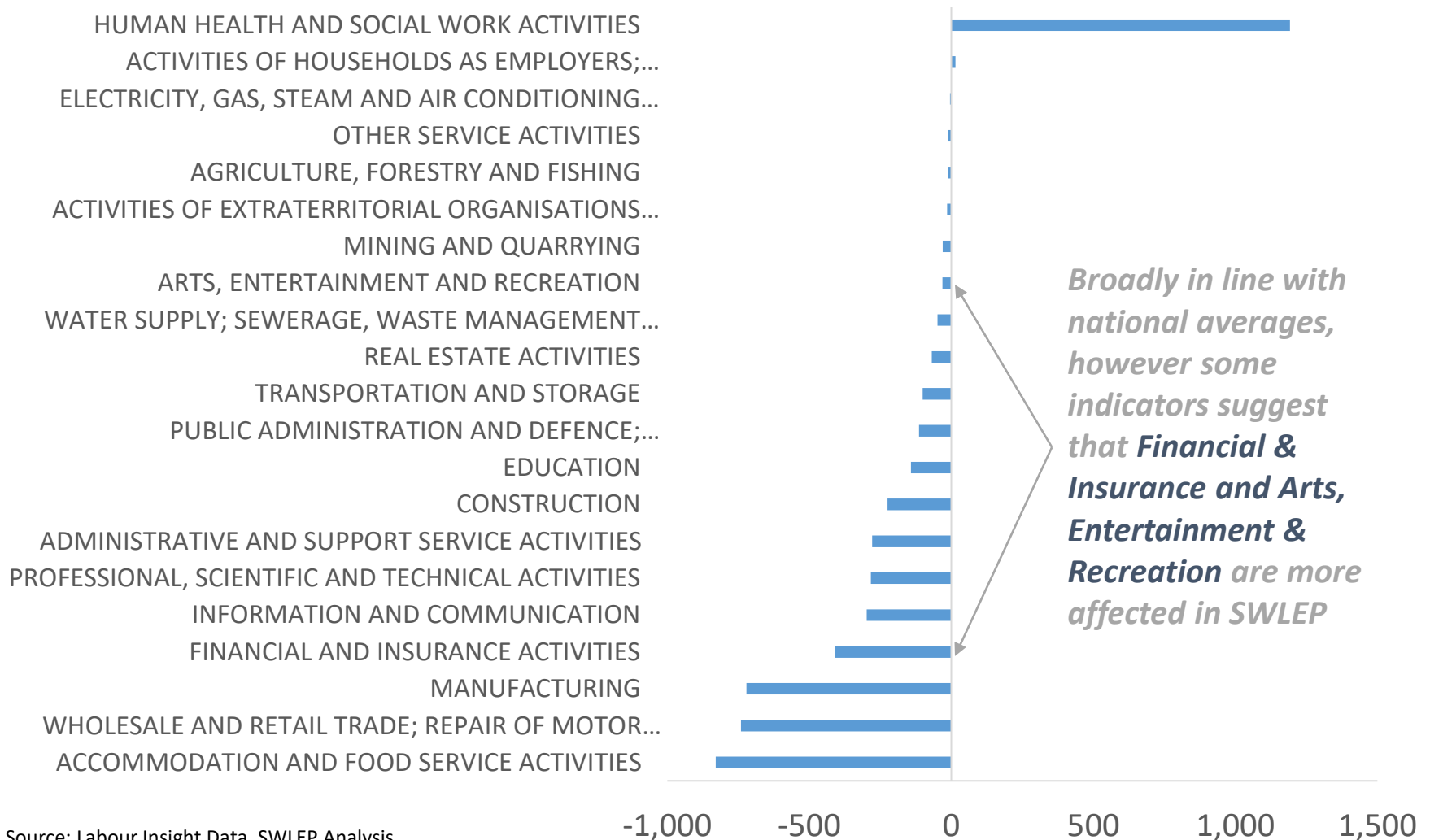


...and locally: Wilts Sep job postings at 95% and apprenticeships 2/3 of the Sep 2019 levels

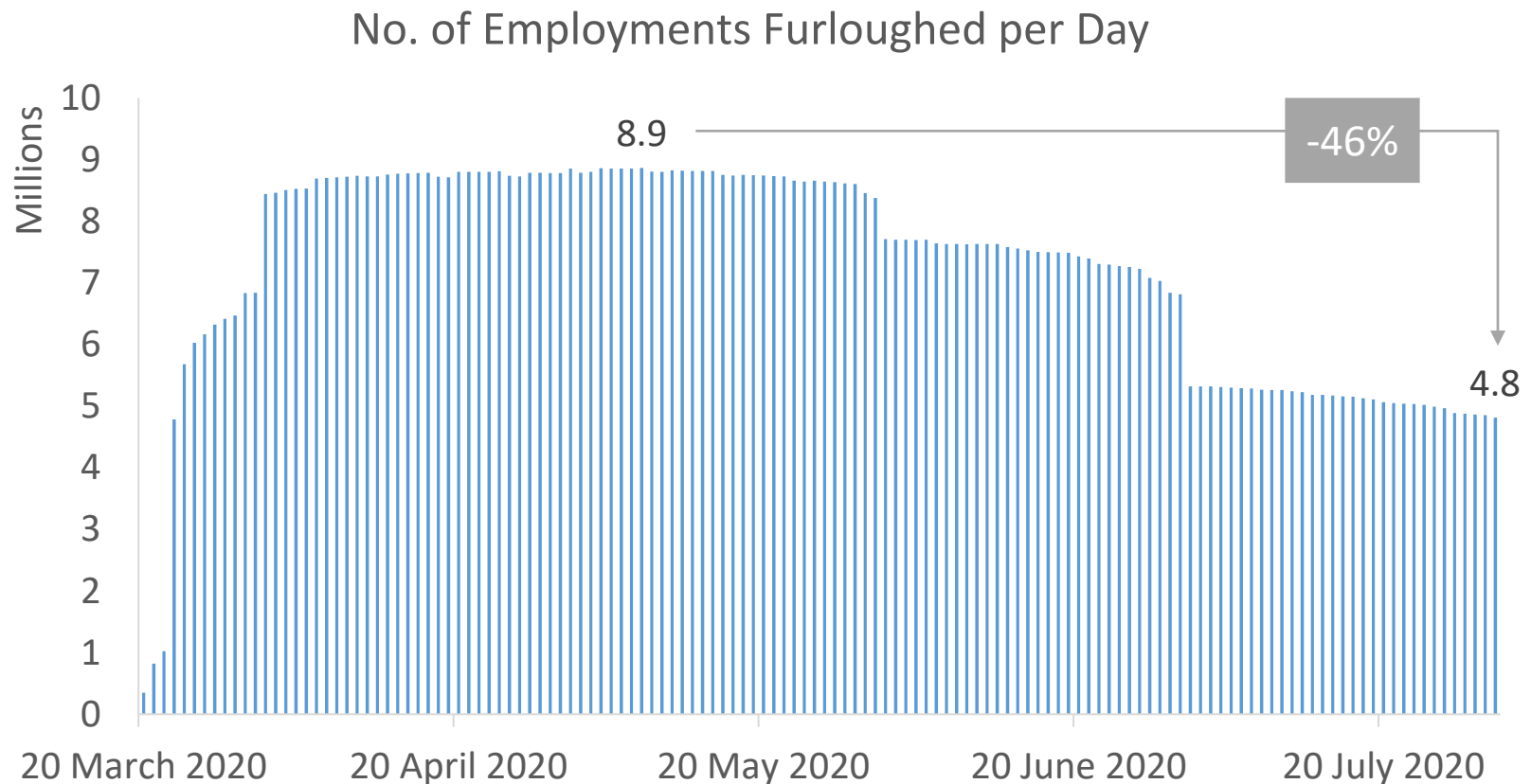


...but not for every sectors...

SWLEP Job Postings Change, Mar-Aug 2020 vs. Mar-Aug 2019



...and the Government schemes are winding down



Contents

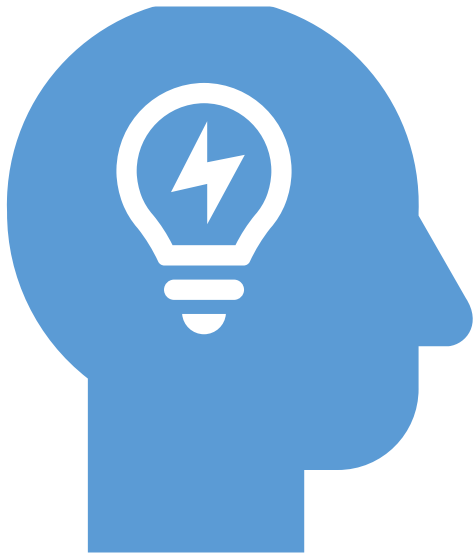
Why we monitor and which data we use

Key insights

How we use data



Understanding local data is key



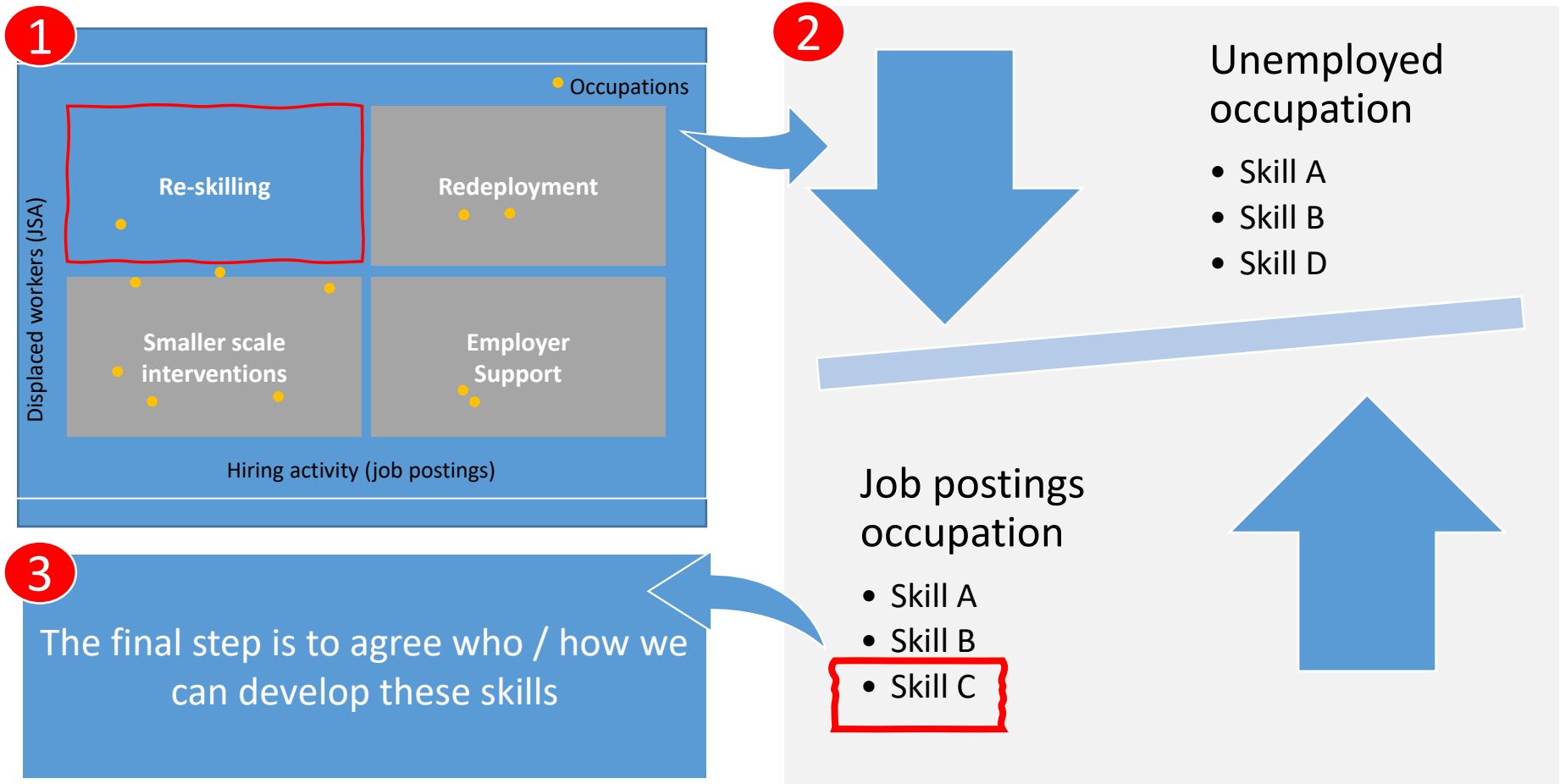
To inform our *decision-making*, ensuring our actions focus on key local challenges, e.g. efficient reskilling



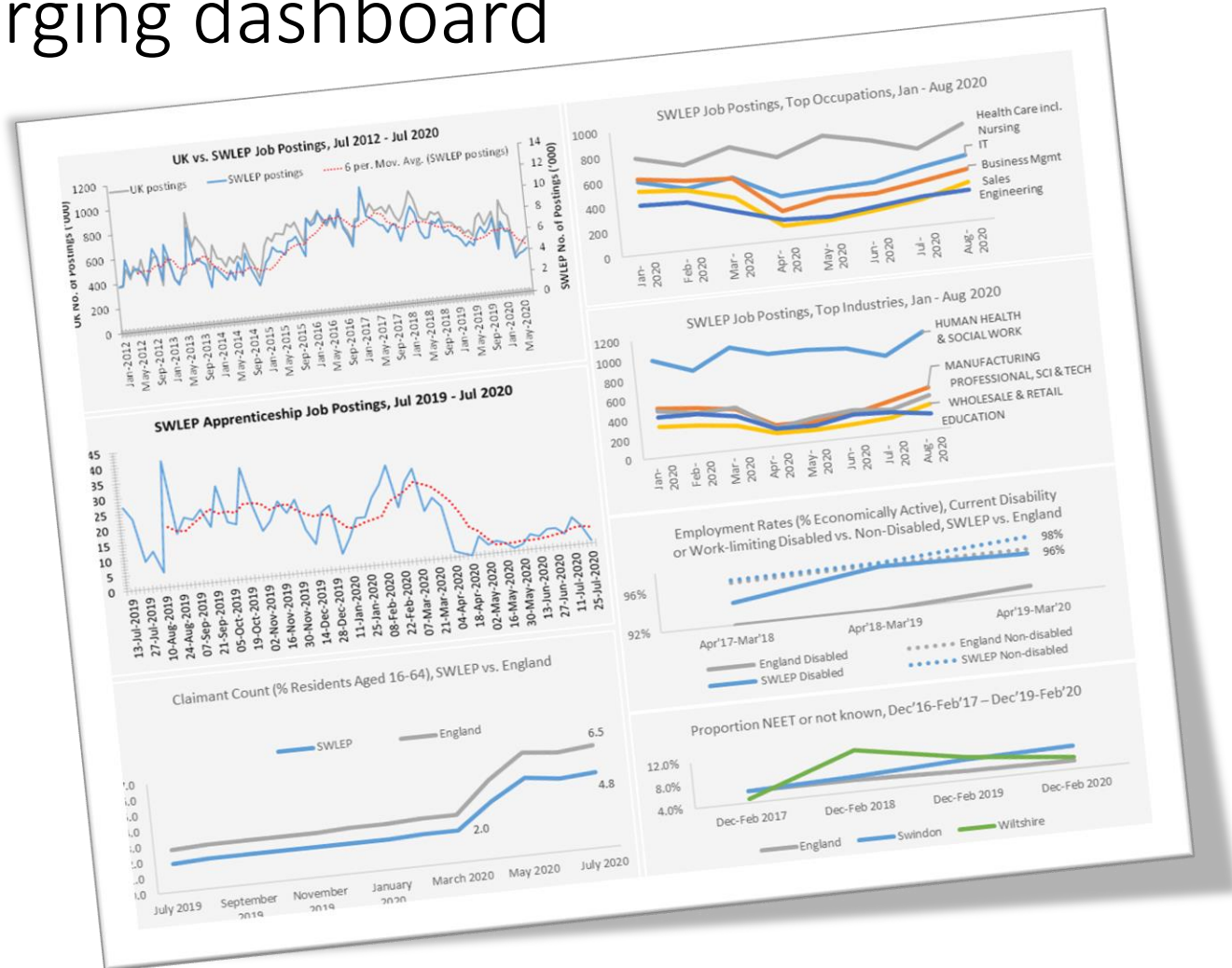
To *monitor* progress and ensure that our actions are yielding the intended impacts, e.g. Dashboard



E.g. informing decision-making to make reskilling more efficient



E.g. monitoring impact through the emerging dashboard



- Thank you for your time
- Any questions?

